

Exploring the Boundaries of Virtual Fence



Webinar 1

Virtual Fence 101 & Vendor Comparison

August 15, 2024

Virtual Fence 101

Brett Blum
Director
Southern Arizona Experiment Station
University of Arizona

The findings and conclusions in this preliminary [publication/presentation/blog] have not been formally disseminated by the U. S. Department of Agriculture and should not be construed to represent any agency determination or policy.

Overview



What is Virtual Fence?



How It Works



Components of a Virtual Fence System



Cost Breakdown



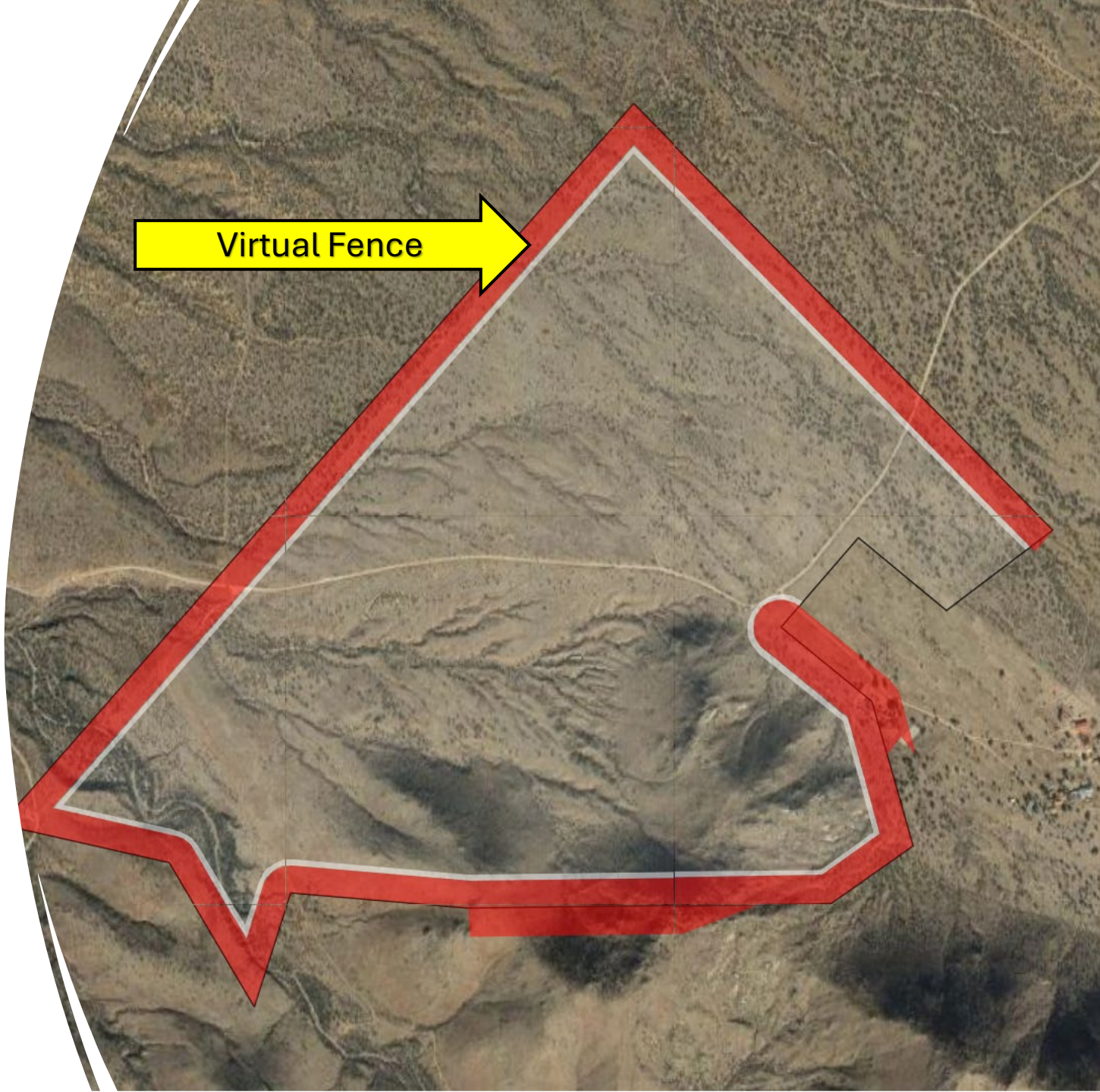
Applications on the Santa Rita Experimental Range



Additional Resources

What are Virtual Fences?

- Artificial boundary relayed by a device, typically a *collar* or *ear tag*, worn by livestock for purposes of geolocation and herd management



Virtual Fence 101

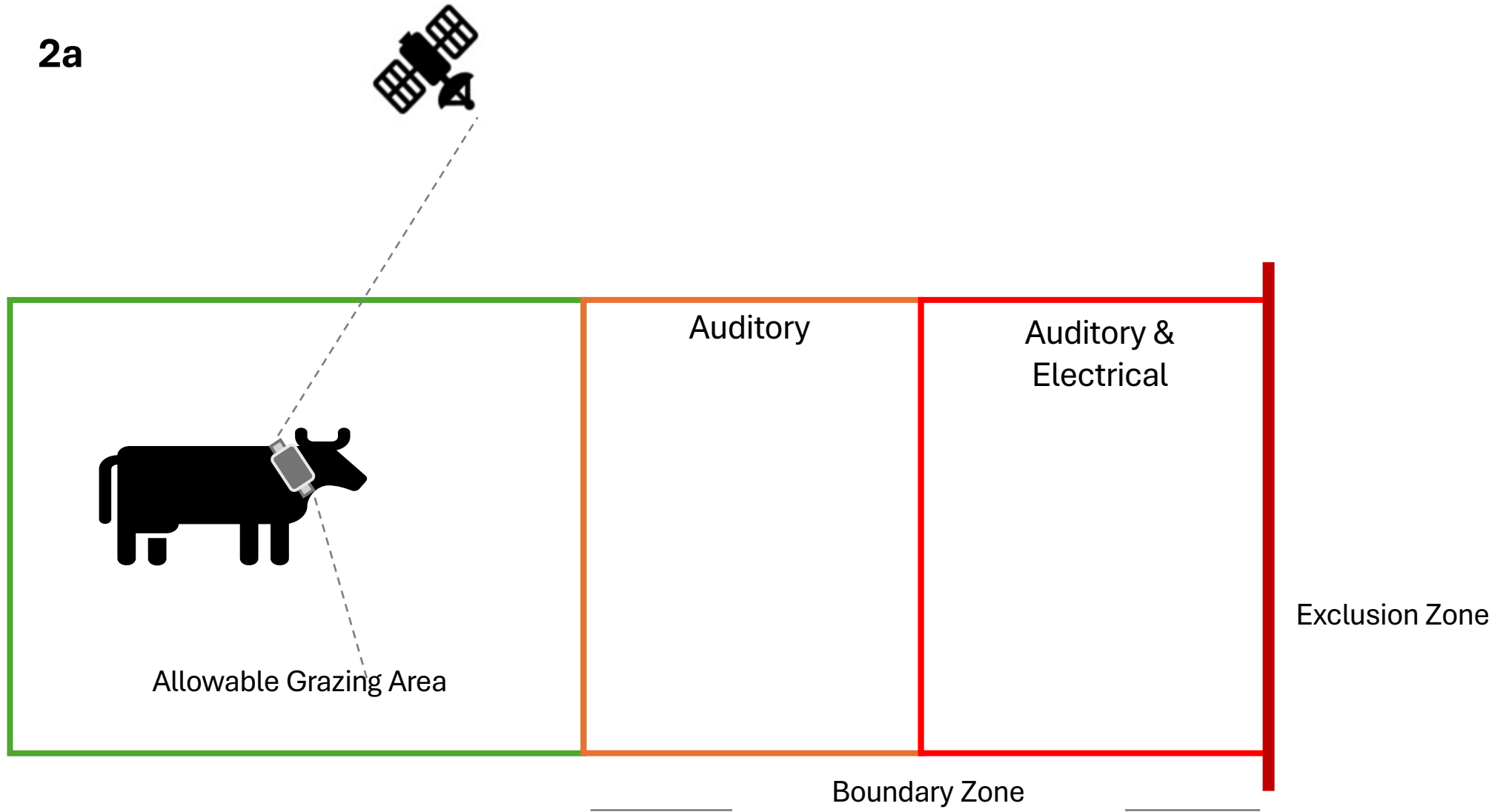
- GPS determines animal's geographic location
- Trains animals to stay within areas by sounds and electrical pulses
- Transmits data to the web interface via radio and cellular networks



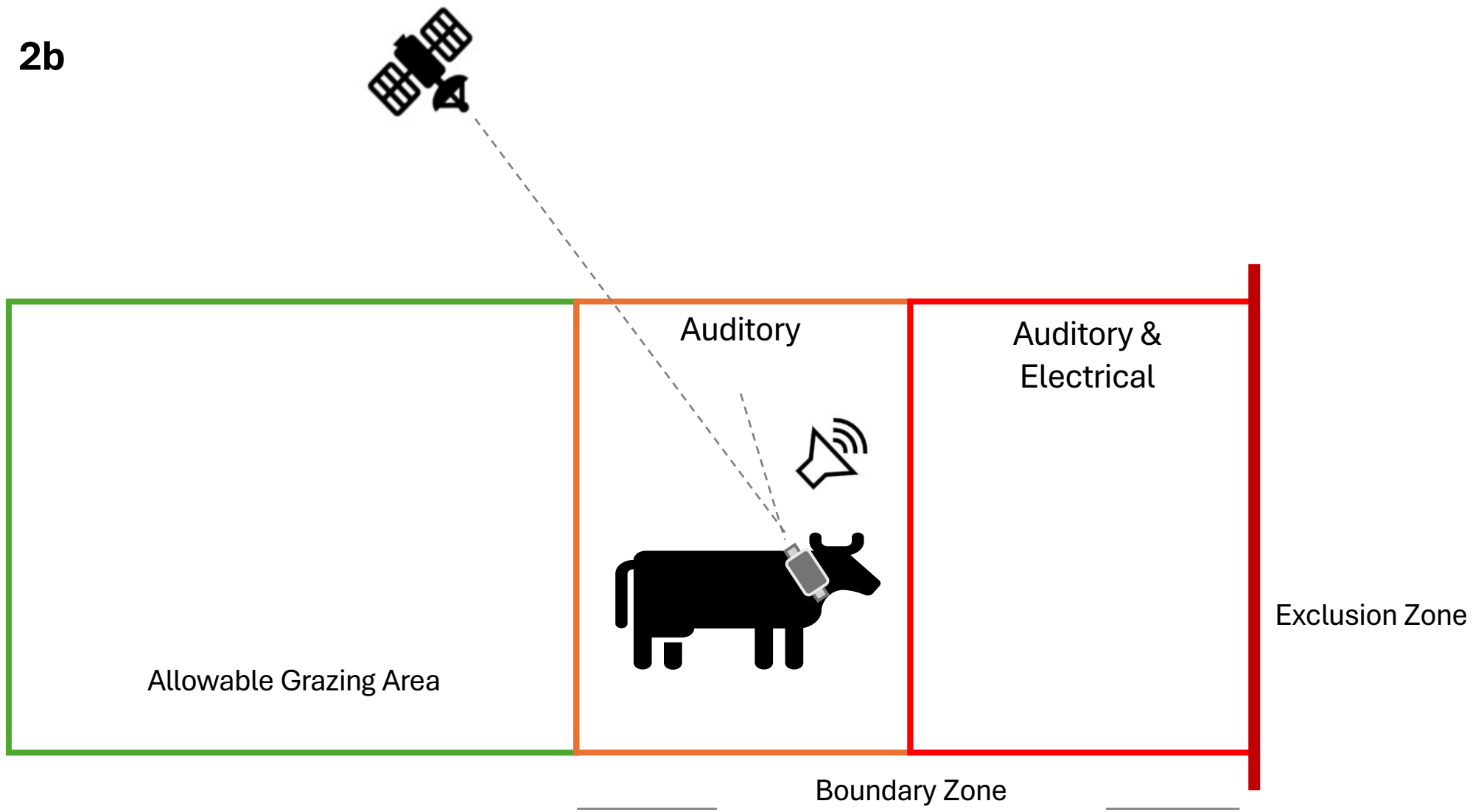
How Virtual Fence Works



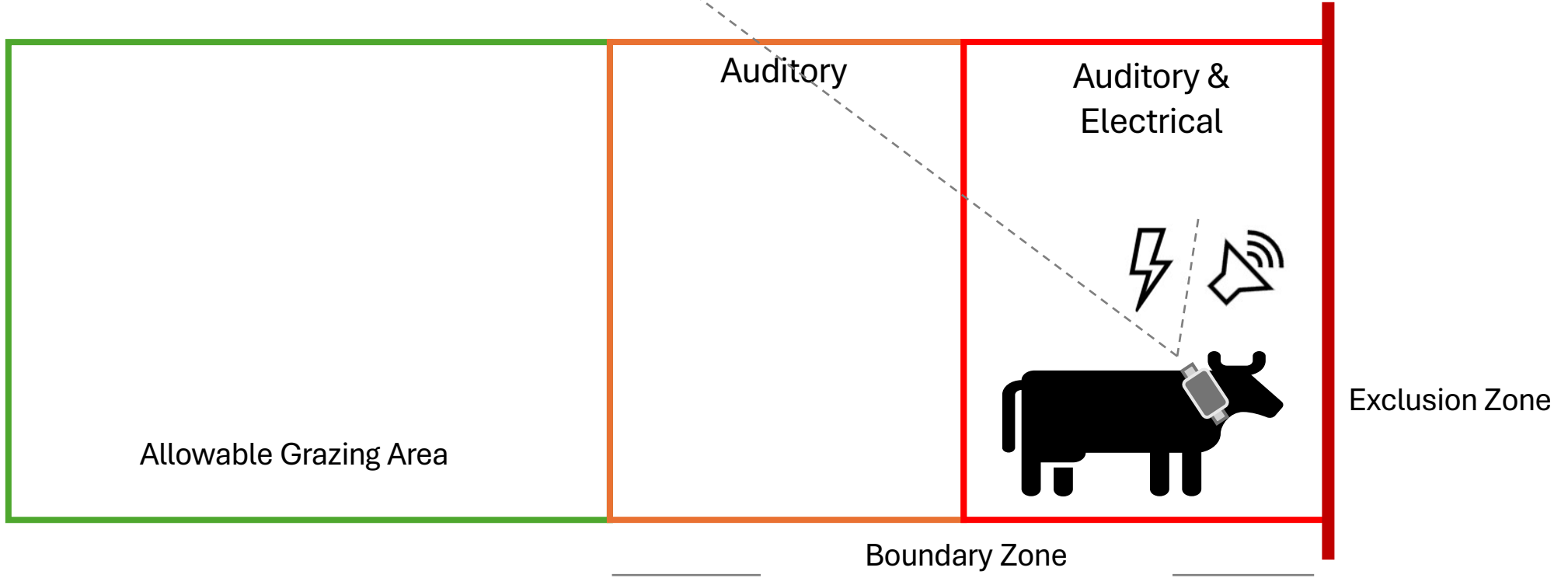
2a



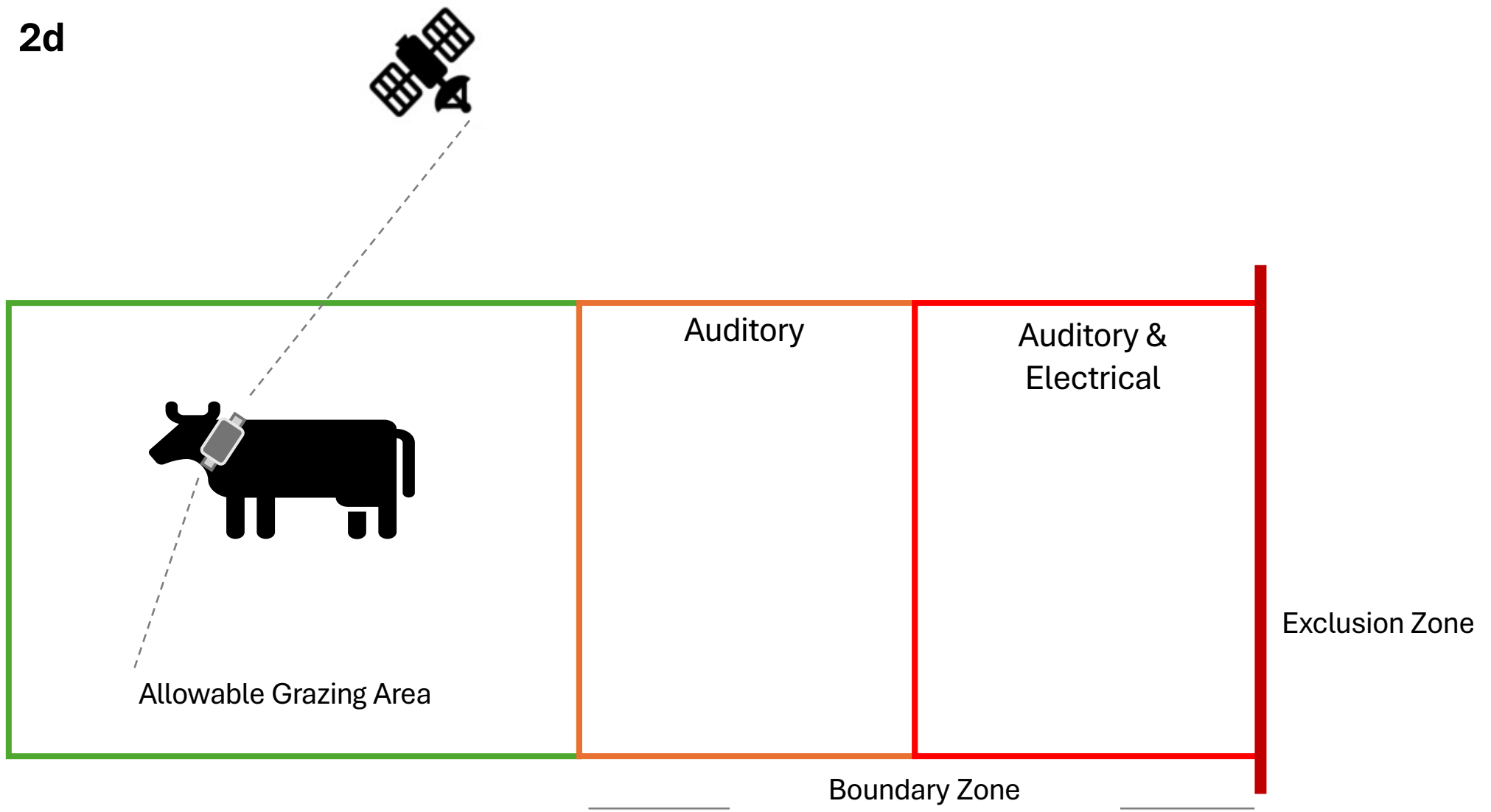
2b



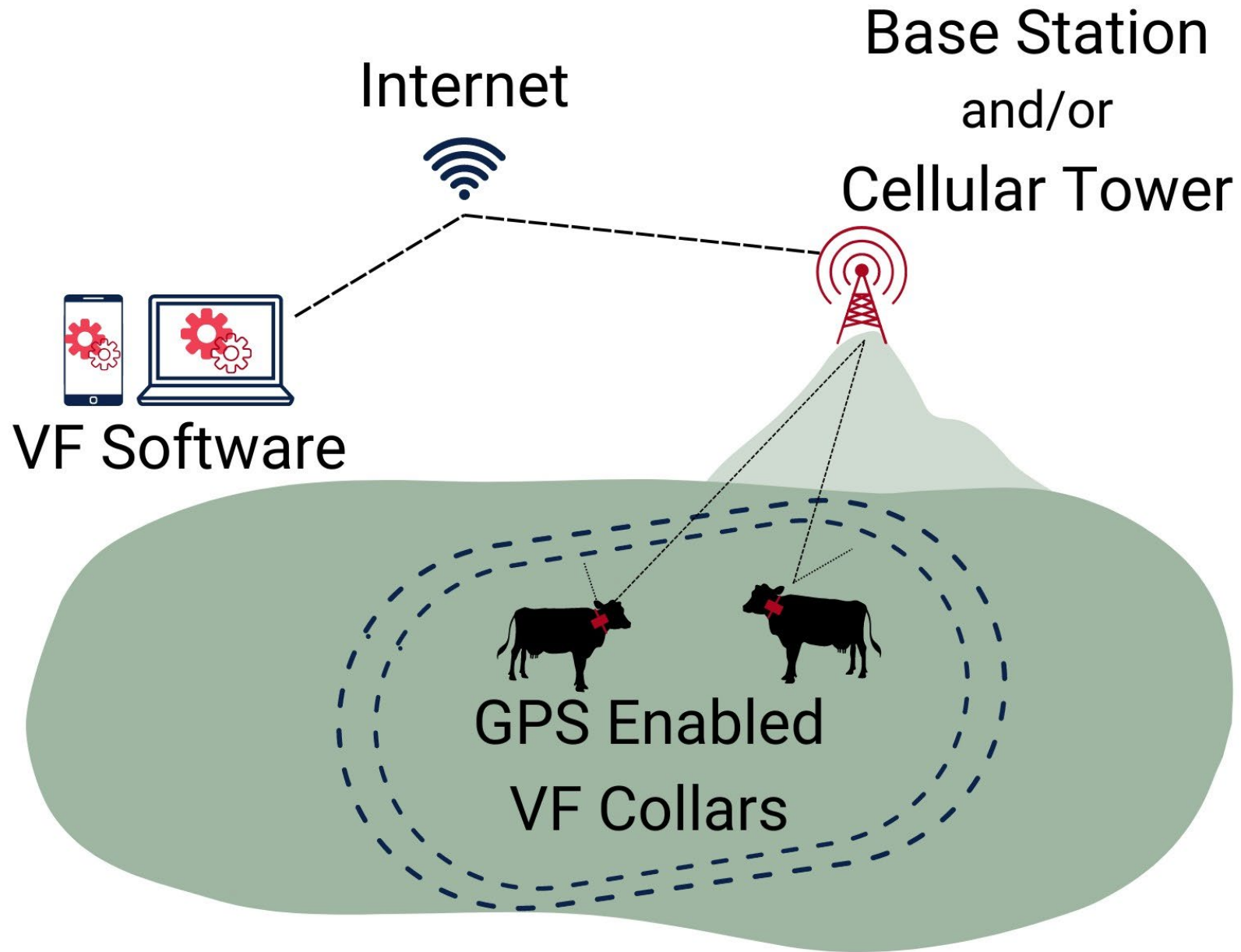
2c



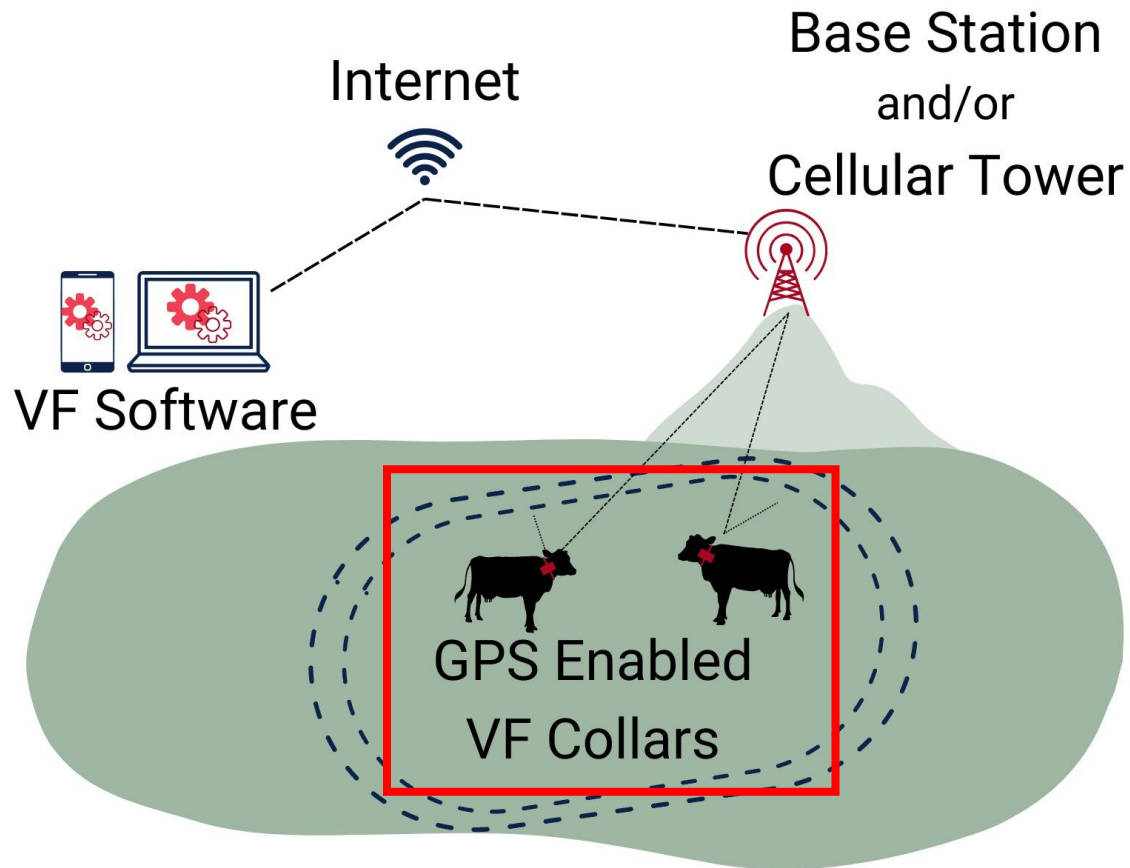
2d



Components of Virtual Fence Systems



Virtual Fence Collars



Cattle Rider V2 Chain Collar – Part Descriptions



VENCE

Chain Collar
w/Adjustment
Carabiners

CR Battery

Cattle Rider
Electronics
Housing



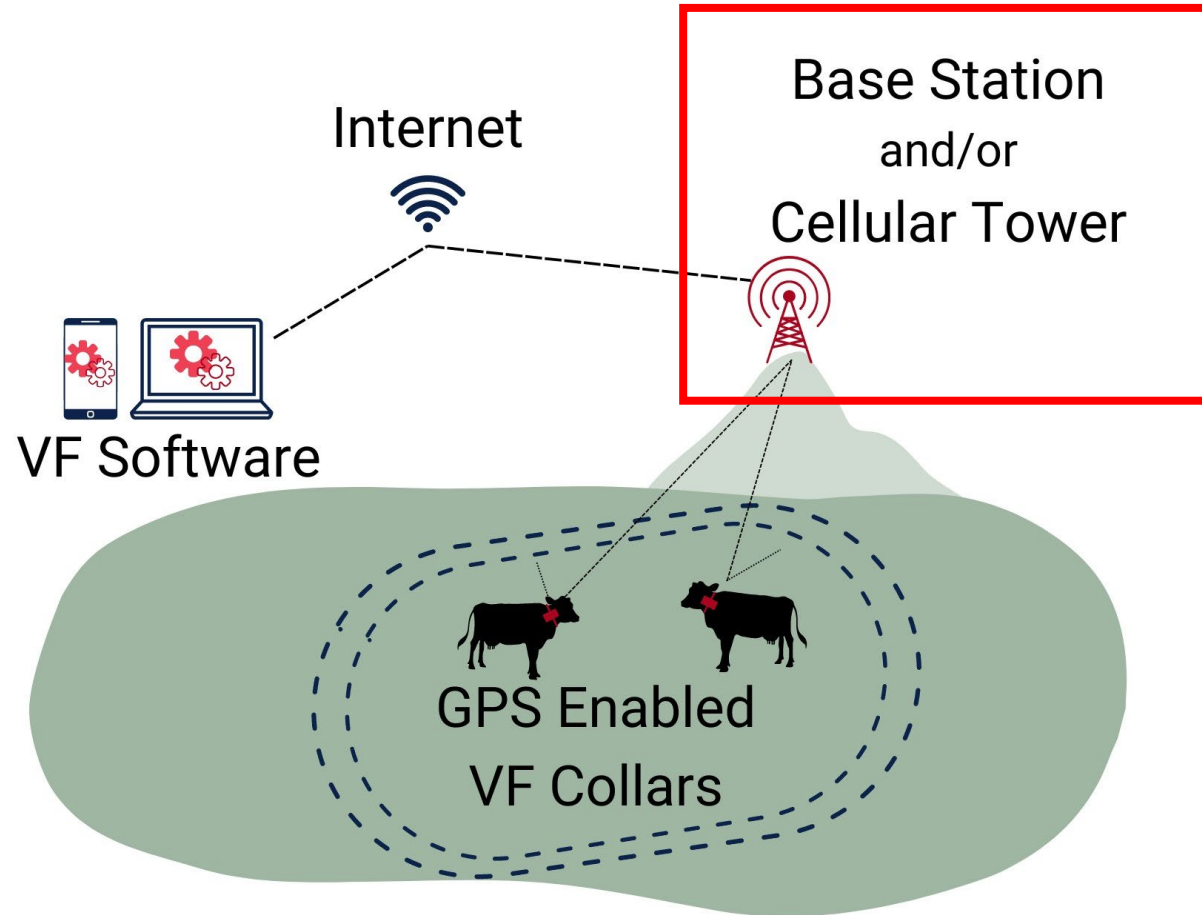
Optional Large
Animal Bridge

Optional Webbing
Bridge

Standard Chain
Bridge

Note: Chain always loops through the bridge and clips back on itself with the carabiner. Do not clip carabiner directly to bridge.

Vence Radio Base Stations

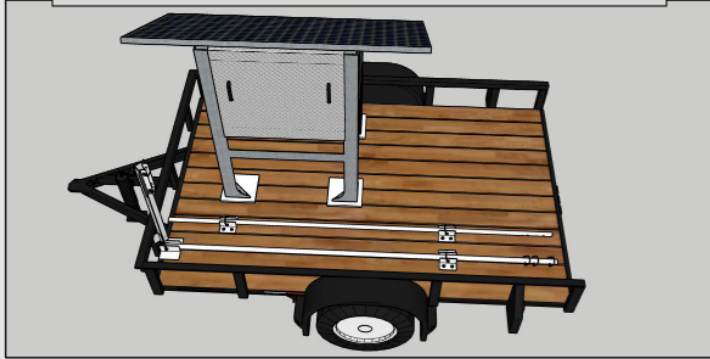


Mobile Base Station

- Not officially supported by Vence Corp.
- Move to new location as herd moves
- Setup in < 1 hour
- Saves \$\$\$

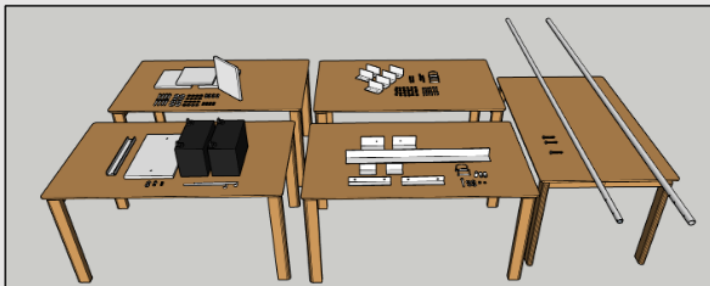


DIY Mobile Base Station Conversion Guide Materials and Step by Step Instructions



How to convert a stationary base station provided by Vence Corp into a mobile base station. Your conversion may look different depending on the type of trailer you use with your conversion.

Disclaimer! The content of this document accurately represents how we have successfully approached increasing the portability of virtual fence base stations, but users should undertake any modification of a base station at their own risk. Vence Corp base stations are not designed to be mounted on a trailer and sensitive equipment could be negatively affected by the consequences of transport. Thus, Vence Corp's product warranty will not cover any damages to the base station resulting from the effects of trailer-mounted transport. Check with your individual equipment supplier for recommendations and concerns.



Written and 3D modeled by – Michael Stauder, Fabrication design by – Tony Runnels
Edited by – Eastern Oregon Agricultural Research Center's Precision Agriculture Tech Group
Questions contact – Rory O'Connor at <https://agsci.oregonstate.edu/eoarc>



Agricultural Research Service
U.S. DEPARTMENT OF AGRICULTURE

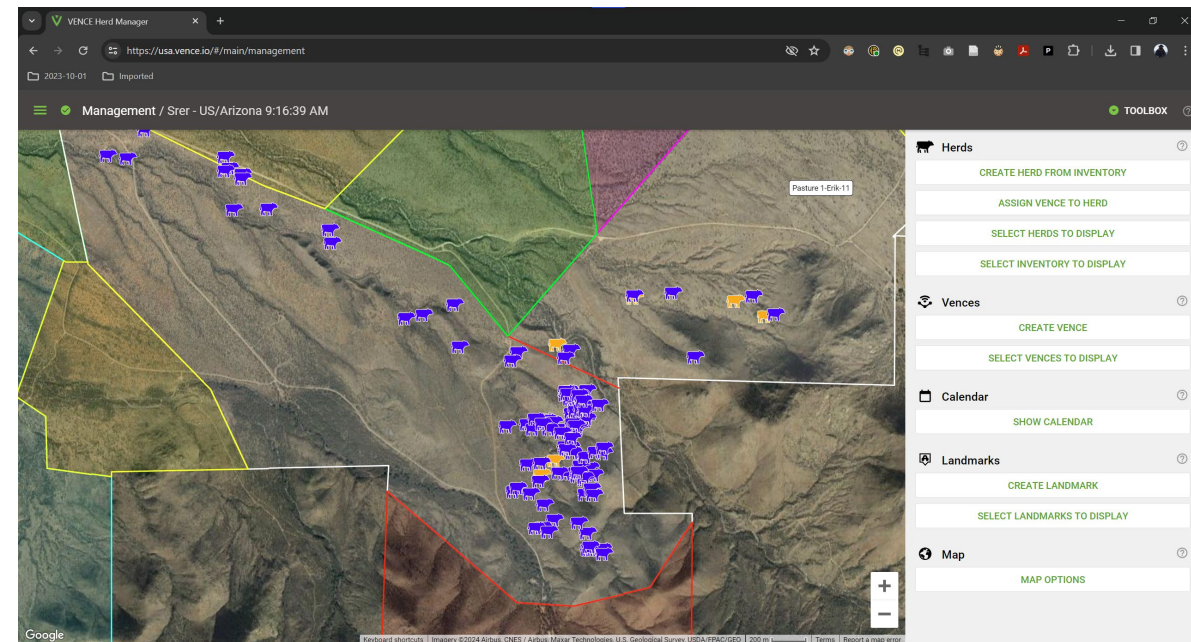
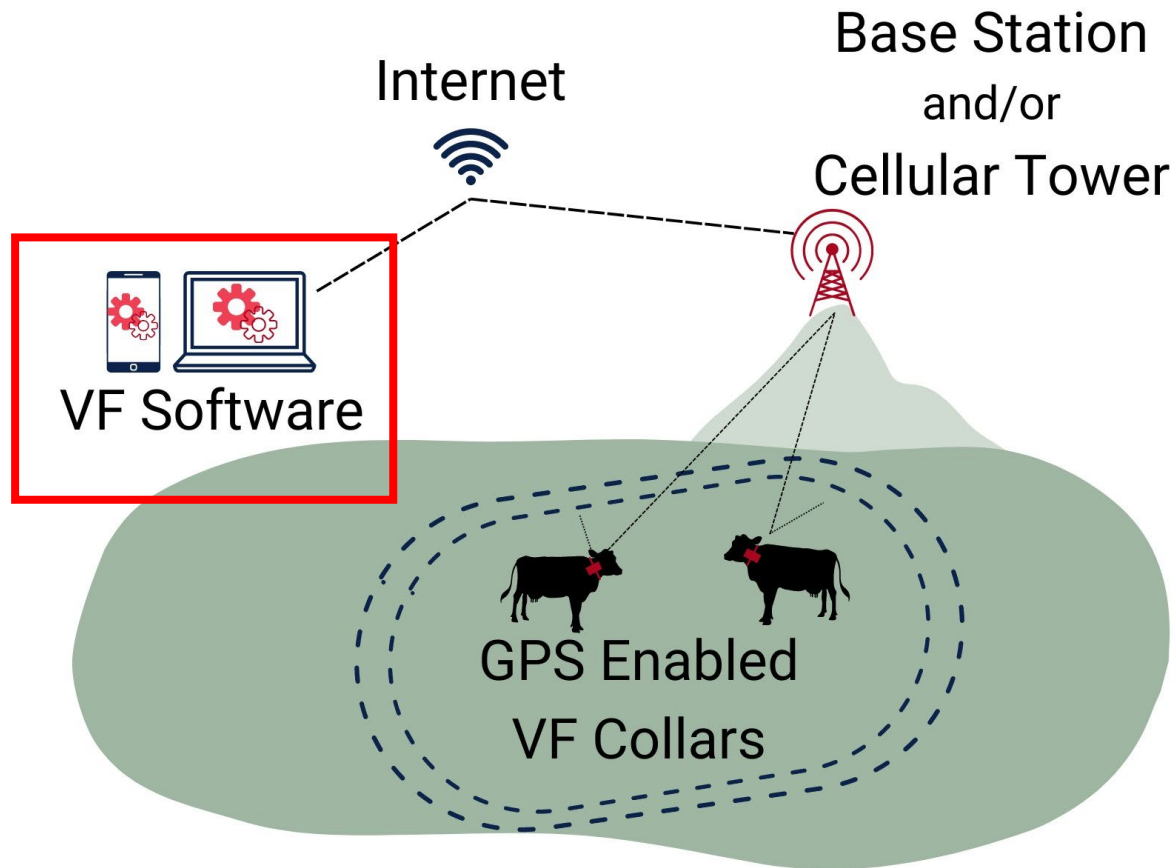
Step-by-Step Instructions on How to Assemble Your Own Mobile Base Station

Link: <https://agsci.oregonstate.edu/biblio/diy-mobile-base-station-conversion-guide-0>

All resources will be linked here:

<https://rangelandsgateway.org/virtual-fence>

Virtual Fence Software



VENCE Herd Manager

https://usa.vence.io/#/main/management

2023-10-01 Imported

Management / Srer - US/Arizona 9:16:39 AM

TOOLBOX

Pasture 1-Erik-11

Google

Keyboard shortcuts Imagery ©2024 Airbus, CNES / Airbus, Maxar Technologies, U.S. Geological Survey, USDA/FPAC/GEO 200 m Terms Report a map error

Herd Management Dashboard

- Herds**
 - CREATE HERD FROM INVENTORY
 - ASSIGN VENCE TO HERD
 - SELECT HERDS TO DISPLAY
 - SELECT INVENTORY TO DISPLAY
- Vences**
 - CREATE VENCE
 - SELECT VENCES TO DISPLAY
- Calendar**
 - SHOW CALENDAR
- Landmarks**
 - CREATE LANDMARK
 - SELECT LANDMARKS TO DISPLAY
- Map**
 - MAP OPTIONS

Cost Breakdown



Our Cost Breakdown



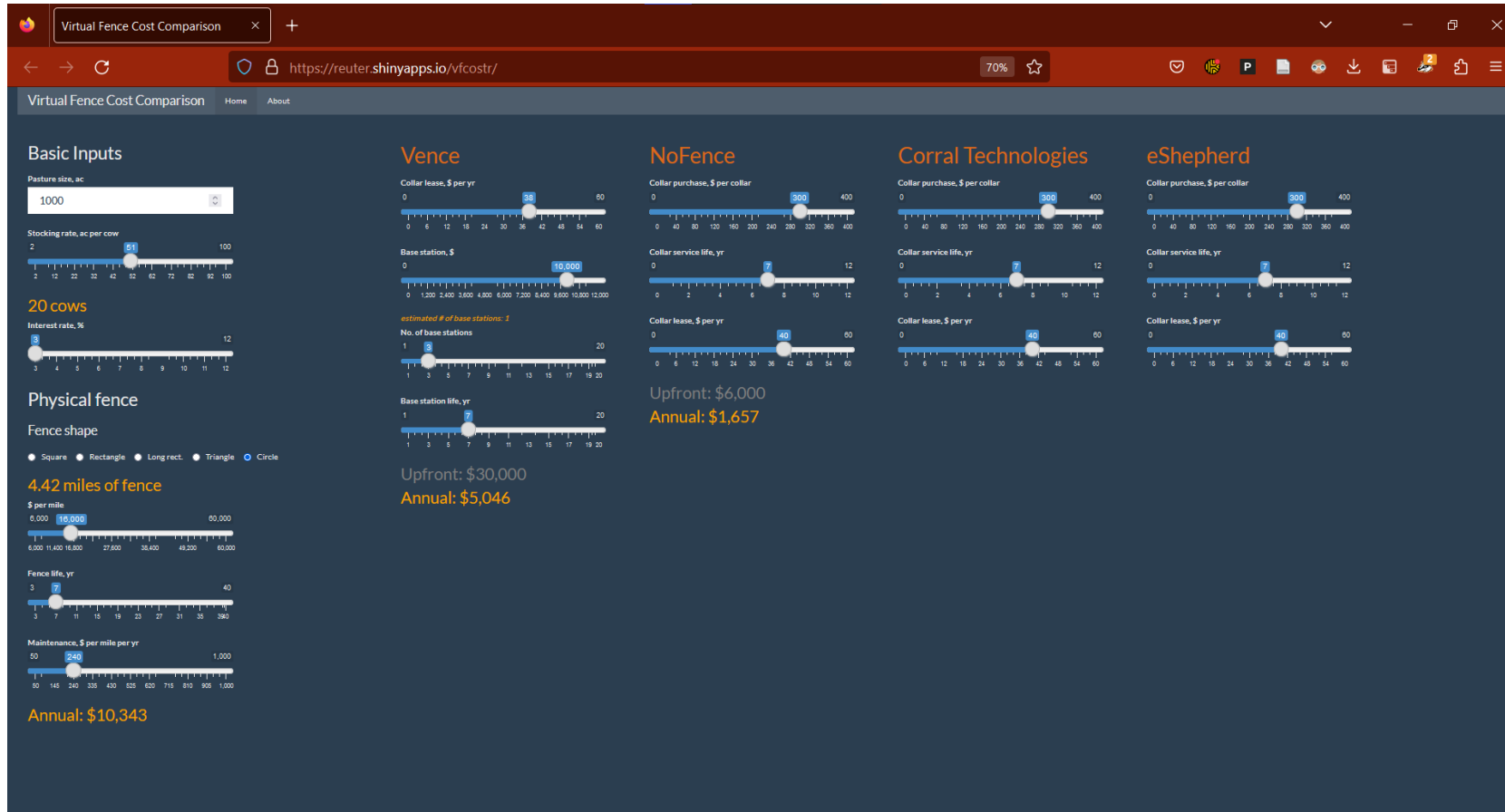
3 base stations & 500 collars

\$36,000 base stations (upfront)

\$20,000 collars (yearly lease)

\$10,000 batteries (yearly)

Cost Comparison Tool



Currently in Beta Testing



Ryan Reuter – Oklahoma State University

<https://reuter.shinyapps.io/vfcostr/>

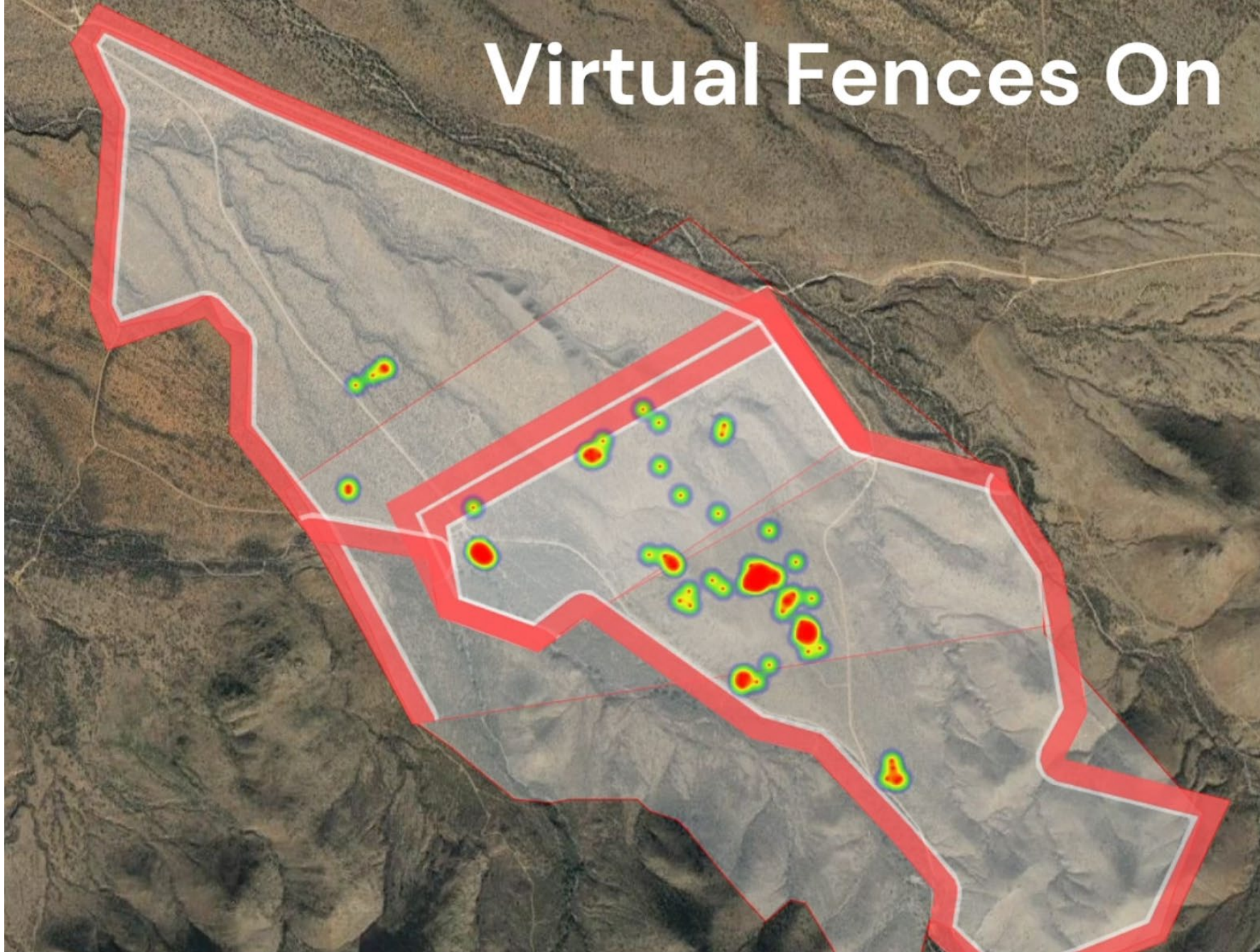
Potential Applications



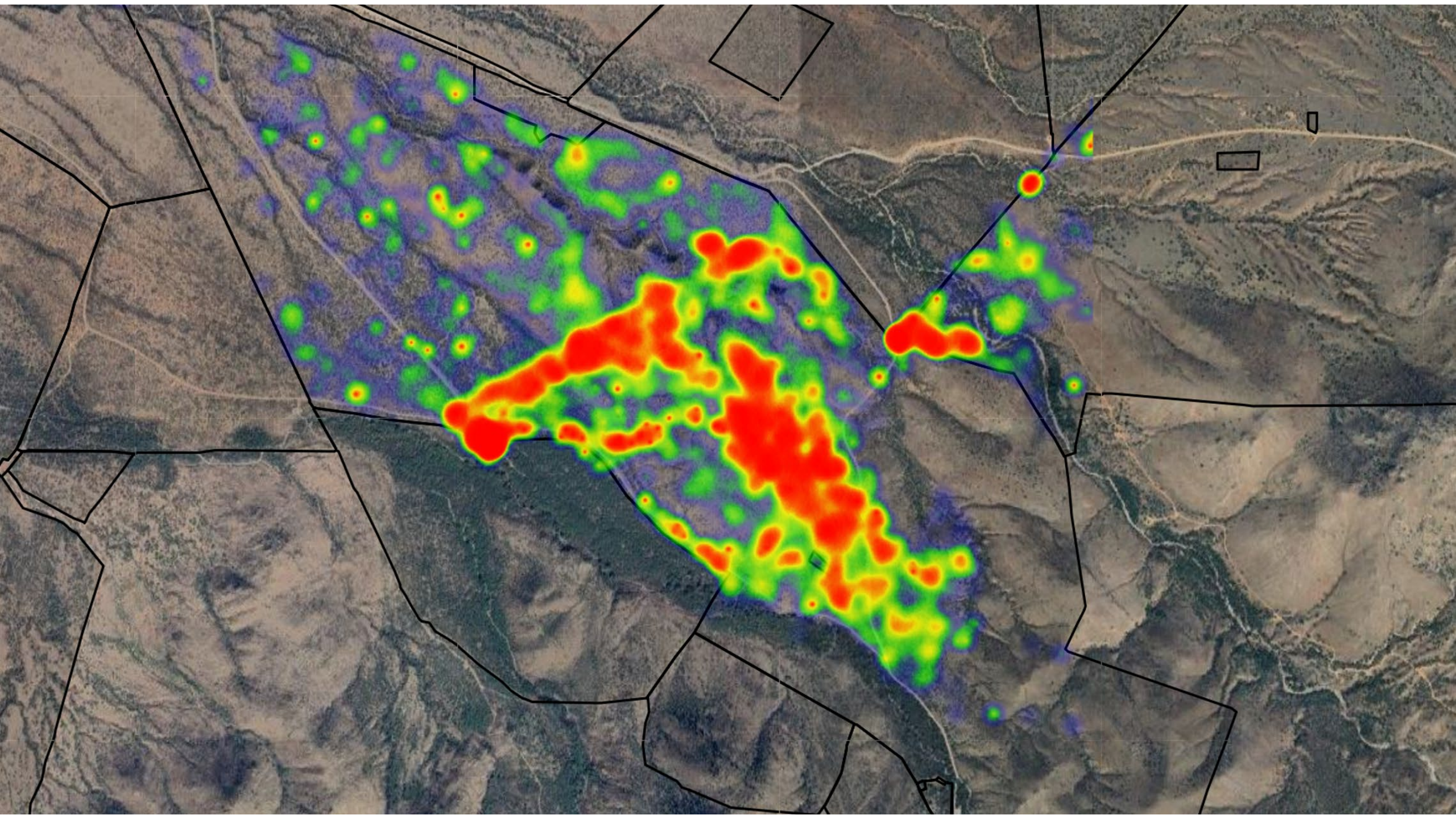
1. Improve Grazing Distribution



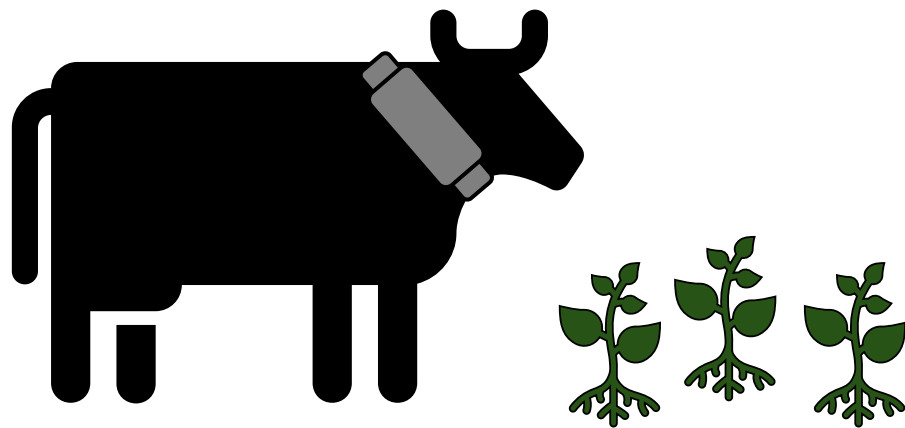
Virtual Fences On



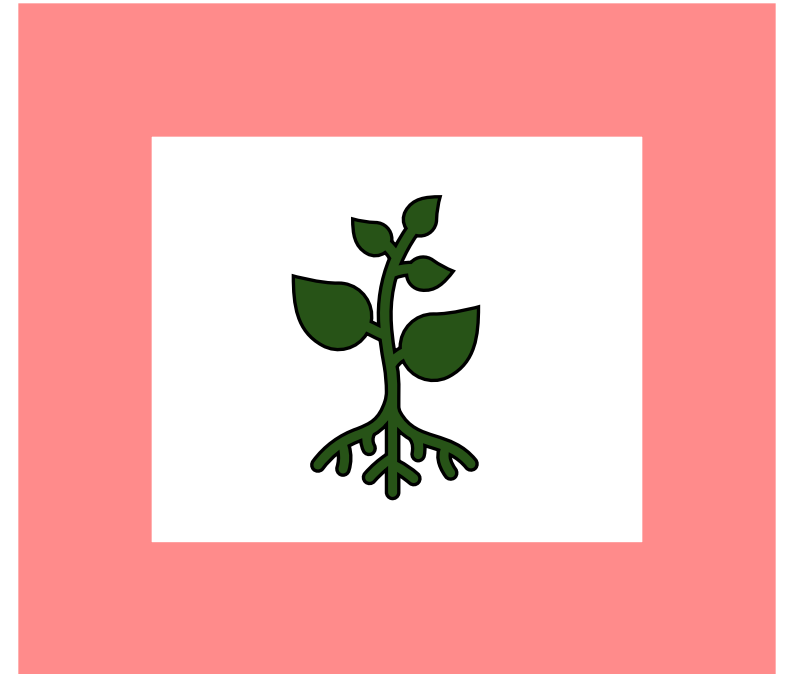
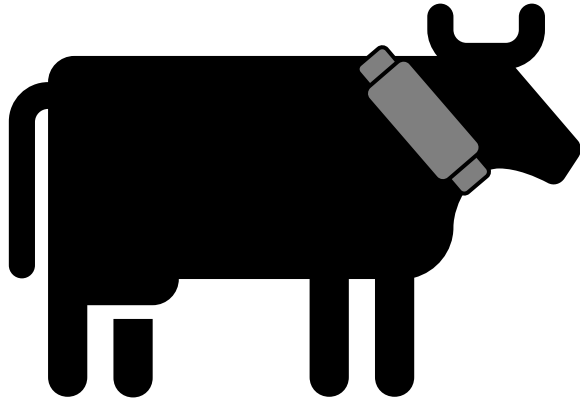
HERD: Small Herd TIME: 12/29/2021, 7:42:00 AM - 1/3/2022, 4:42:00 PM



Targeted Grazing



Avoid Toxic/Noxious Weeds



Post-Fire or Disturbance



Supplement Existing Fences

Forest Service authorizes \$2.3 mil x +

← → ↻ https://www.fs.usda.gov/inside-fs/out-and-about/forest-service-authorizes-23-million-replace-range-allotment-infrastructure 🔍 📄 ⚙️ 🌐

Inside the FS

- Delivering the mission
- From the Chief's Desk
- Operation Care and Recovery


Forest Service authorizes \$2.3 million to replace range allotment infrastructure destroyed by Telegraph Fire

ARIZONA - Tonto National Forest received approval for \$2.3 million of Minor Facilities and Infrastructure Rehabilitation Pilot Program funding to repair or replace infrastructure damaged and destroyed as a result of the Telegraph Fire, the largest wildfire in Arizona during the 2021 wildfire season.

Following post-fire assessments, the Tonto submitted a funding request utilizing the Minor Facilities and Infrastructure Rehabilitation Pilot program to the National Burned Area Emergency Response leadership for review and approval. The BAER program is currently administering this pilot program in cooperation with Fire and Aviation Management to address needs beyond the emergency BAER actions. Unlike the BAER program which is specific to mitigating post-fire emergencies on federal lands, this new pilot program authorizes repair of minor national forest land facilities and infrastructure damaged and/or destroyed by wildfires.

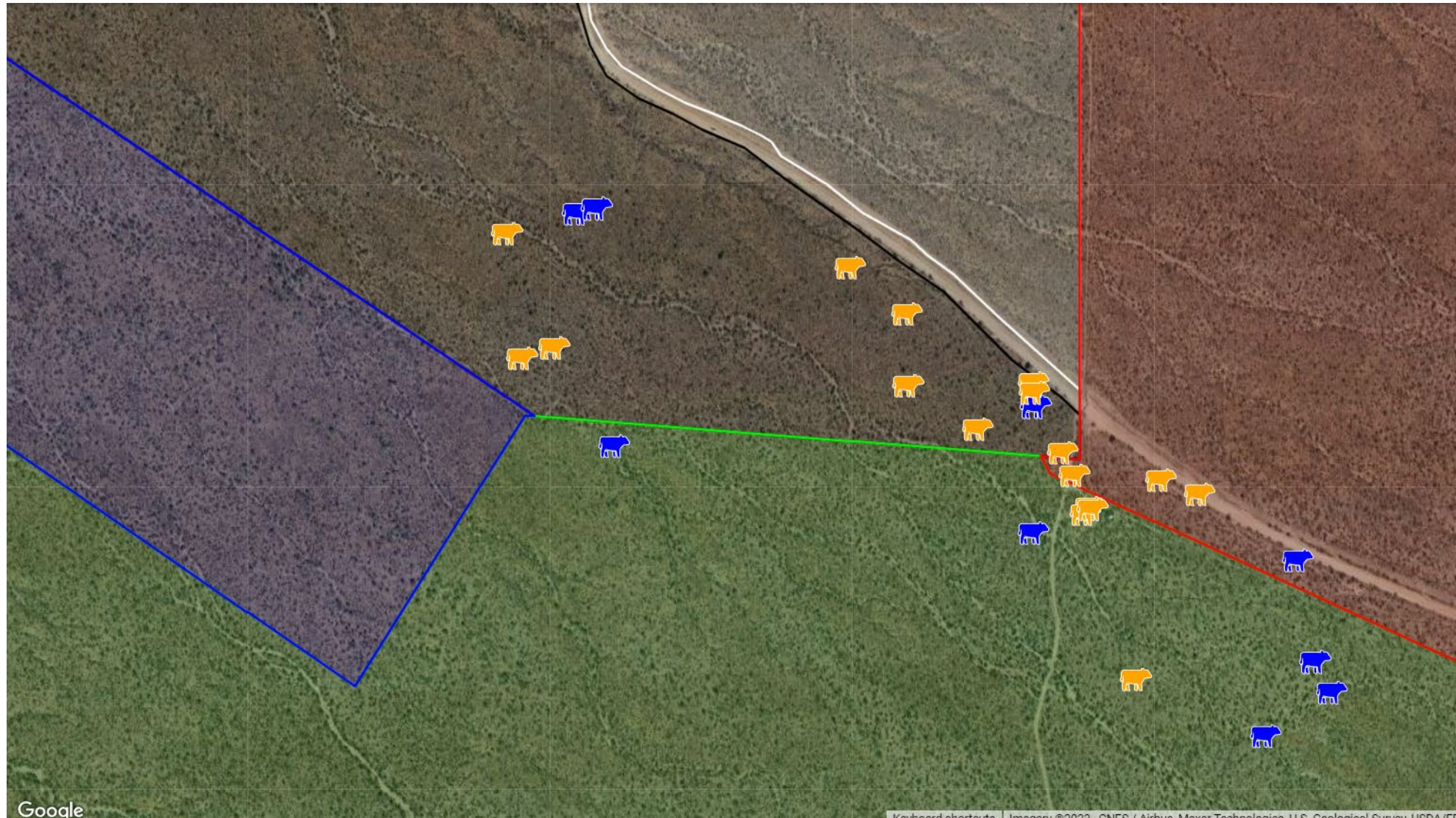
The Telegraph Fire burned or damaged a significant amount of national forest land range infrastructure across nine allotments. Range specialist identified approximately 66 miles of allotment boundary fencing damaged and over 61 miles of interior pasture fencing destroyed.

Tonto National Forest officials worked directly with permittees, the Natural Resource Conservation Service, Natural Resource Conservation Districts, Farm Service



One of several boundary allotment fences destroyed by the Telegraph Fire, June 6, 2021. Over 66 miles of allotment boundary fencing will be replaced with funding received by the BAER pilot program. USDA Forest Service photo by Bain Grantham.

Easier to Locate and Gather Cattle



Reduce Use in Sensitive Areas

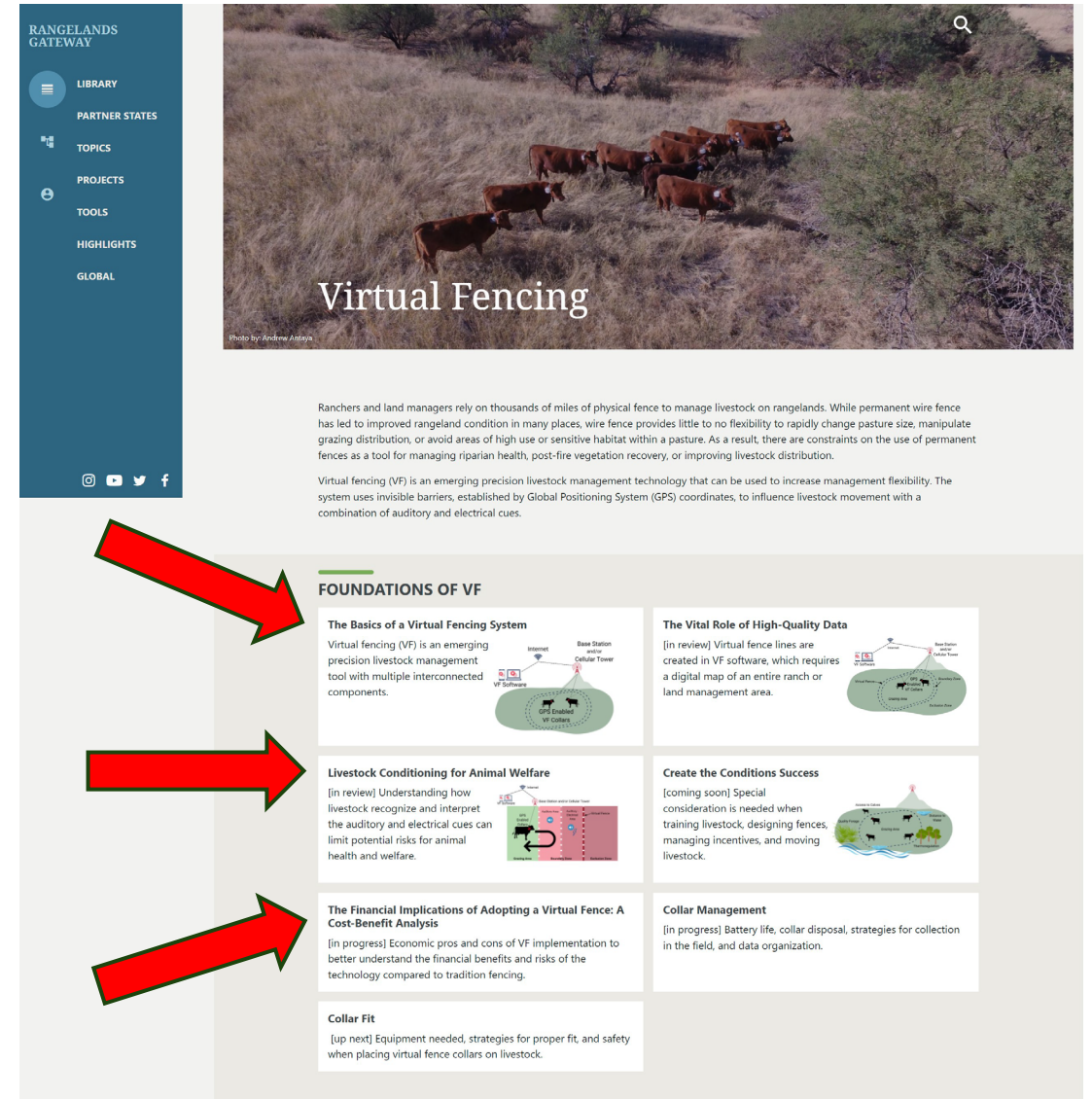


Additional Resources



The Virtual Fence User Guide

<https://rangelandsgateway.org/virtual-fence>



RANGELANDS GATEWAY

- LIBRARY
- PARTNER STATES
- TOPICS
- PROJECTS
- TOOLS
- HIGHLIGHTS
- GLOBAL





Virtual Fencing

Photo by Andrew Ardava

Ranchers and land managers rely on thousands of miles of physical fence to manage livestock on rangelands. While permanent wire fence has led to improved rangeland condition in many places, wire fence provides little to no flexibility to rapidly change pasture size, manipulate grazing distribution, or avoid areas of high use or sensitive habitat within a pasture. As a result, there are constraints on the use of permanent fences as a tool for managing riparian health, post-fire vegetation recovery, or improving livestock distribution.

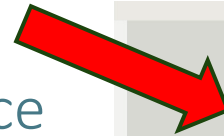
Virtual fencing (VF) is an emerging precision livestock management technology that can be used to increase management flexibility. The system uses invisible barriers, established by Global Positioning System (GPS) coordinates, to influence livestock movement with a combination of auditory and electrical cues.

FOUNDATIONS OF VF

The Basics of a Virtual Fencing System Virtual fencing (VF) is an emerging precision livestock management tool with multiple interconnected components. 	The Vital Role of High-Quality Data [in review] Virtual fence lines are created in VF software, which requires a digital map of an entire ranch or land management area. 
Livestock Conditioning for Animal Welfare [in review] Understanding how livestock recognize and interpret the auditory and electrical cues can limit potential risks for animal health and welfare. 	Create the Conditions Success [coming soon] Special consideration is needed when training livestock, designing fences, managing incentives, and moving livestock. 
The Financial Implications of Adopting a Virtual Fence: A Cost-Benefit Analysis [in progress] Economic pros and cons of VF implementation to better understand the financial benefits and risks of the technology compared to tradition fencing.	Collar Management [in progress] Battery life, collar disposal, strategies for collection in the field, and data organization.
Collar Fit [up next] Equipment needed, strategies for proper fit, and safety when placing virtual fence collars on livestock.	

The Virtual Fence User Guide

<https://rangelandsgateway.org/virtual-fence>



A screenshot of a web page titled 'TOOLS' is shown. It contains five tool cards with titles and brief descriptions. The cards are: 'Optimal base station location', 'Geospatial data collections and resources', 'BLM data', 'Virtual fence cost comparison', and 'Forest Service geodata clearinghouse'. A red arrow points to the 'Virtual fence cost comparison' card from above.

TOOLS

Optimal base station location [↗](#)

Plot the best location for a single base station. Requires ArcGIS Pro with the Spatial Analyst extension enabled.

Geospatial data collections and resources [↗](#)

The Arizona Geographic Information Council curates GIS data resources for Arizona and other western states.

BLM data [↗](#)

The Bureau of Land Management shares geographic data and content that can be downloaded.

Virtual fence cost comparison [↗](#)

Compare the cost of VF systems and physical fence in different scenarios.

Forest Service geodata clearinghouse [↗](#)


The U.S. Forest Service maintains digital rangeland data, including boundaries and ownership, natural resources, roads and trails, and other datasets.

The Virtual Fence User Guide

<https://rangelandsgateway.org/virtual-fence>




WORKSHOPS

A photograph of a green and white virtual fence system trailer parked in a grassy field under a cloudy sky.


Exploring the boundaries of virtual fencing

Workshop 1

A photograph of a woman in a plaid shirt standing next to a brown cow in a barn, looking at a piece of equipment.

Exploring the boundaries of VF: Comparing vendors & rancher insights


Workshop 2

A close-up photograph of a brown cow's head in a field, with a blue tag on its ear.

Soil Health & Virtual Fencing

April 16, 2024 | Ranching Heritage Alliance | Eagar, AZ

Workshop 3

A large red arrow with a black outline points from the bottom right towards the 'Workshop 3' button.

The University of Arizona Virtual Fence Program



THE UNIVERSITY OF ARIZONA
**Arizona
Experiment Station**



Cooperative Extension



COLLEGE OF AGRICULTURE, LIFE & ENVIRONMENTAL SCIENCES
**Natural Resources
& the Environment**

Contributors

Flavie Audoin
Carter Blouin
Brett Blum
Amber Dalke
Aaron Lien
Brandon Mayer
Sarah Noelle
Dari Duval
Jose Quintero
Jose Soto
Hector Justiniani
Andrew Antaya
Joslyn Beard
George Ruyle



This material is based upon work that is supported by the National Institute of Food and Agriculture, U.S. Department of Agriculture, under award number 2021-38640-34695 through the Western Sustainable Agriculture Research and Education program under project number WPDP22-016. USDA is an equal opportunity employer and service provider. Any opinions, findings, conclusions, or recommendations expressed in this publication are those of the author(s) and do not necessarily reflect the view of the U.S. Department of Agriculture.

This work is supported by the AFRI Foundational and Applied Science Program: Inter-Disciplinary Engagement in Animal Systems (IDEAS) [award no. 2022-10726] from the USDA National Institute of Food and Agriculture.

Additional funding was provided by Arizona Experiment Station, the Marley Endowment for Sustainable Rangeland Stewardship, Arizona Cooperative Extension, and The Nature Conservancy.

