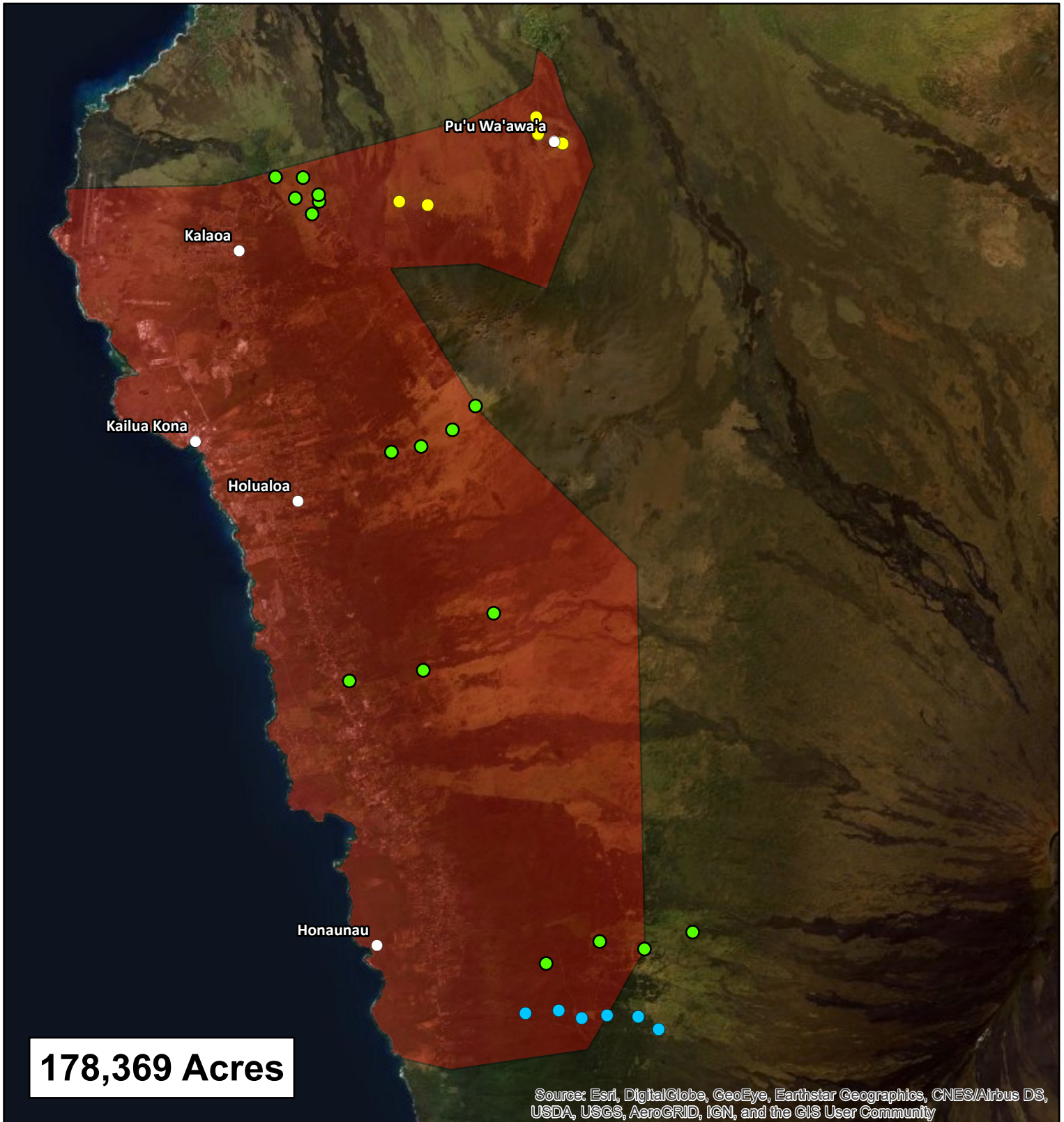








Acreage of Infected Area 2021



The Two Line Spittlebug project is supported by grants through the Hawaii Dept. of Agriculture, Contract No. 65973; Hawaii Dept. of Land and Natural Resources, Hawaii Invasive Species Council Contract No. C81112; and Hawaii County Office of Research and Development via the Big Island Resource Conservation and Development Council Contract No. C006362.

Legend

-  TLSB infected Area
-  Ranch Survey Transects
-  TLSB Found at Kealia South
-  TLSB Found at Pu'u Wa'awa'a

0 3 6 12 18 24 Miles

