



Hawaii Scrapie Program 2020

**2020 University of Hawaii at Manoa
College of Tropical Agriculture and Human Resources
Virtual Livestock Industry Field Day**

**Kim Kozuma, DVM
HDOA, Animal Industry Division
Veterinary Medical Officer/Scrapie Program Coordinator**



SCRAPIE (In a nutshell)



It's not so BAAAAD

September 2020



SCRAPIE - Overview

- What is scrapie and why is it important
- Where we are now
- Why / Who - Where Hawaii fits in all this
- How – Getting & submitting samples
- Traceability & QO 109-A
- Questions?



SCRAPIE – Huh?

- Susceptible sheep and goats are typically infected as young lambs or kids through contact with the infected placenta and birth fluids from infected females – not necessarily mother to offspring.
- Incubation period typically 2-to-5 years.
- Always fatal – no treatment or vaccine.
- Males become infected but don't transmit disease



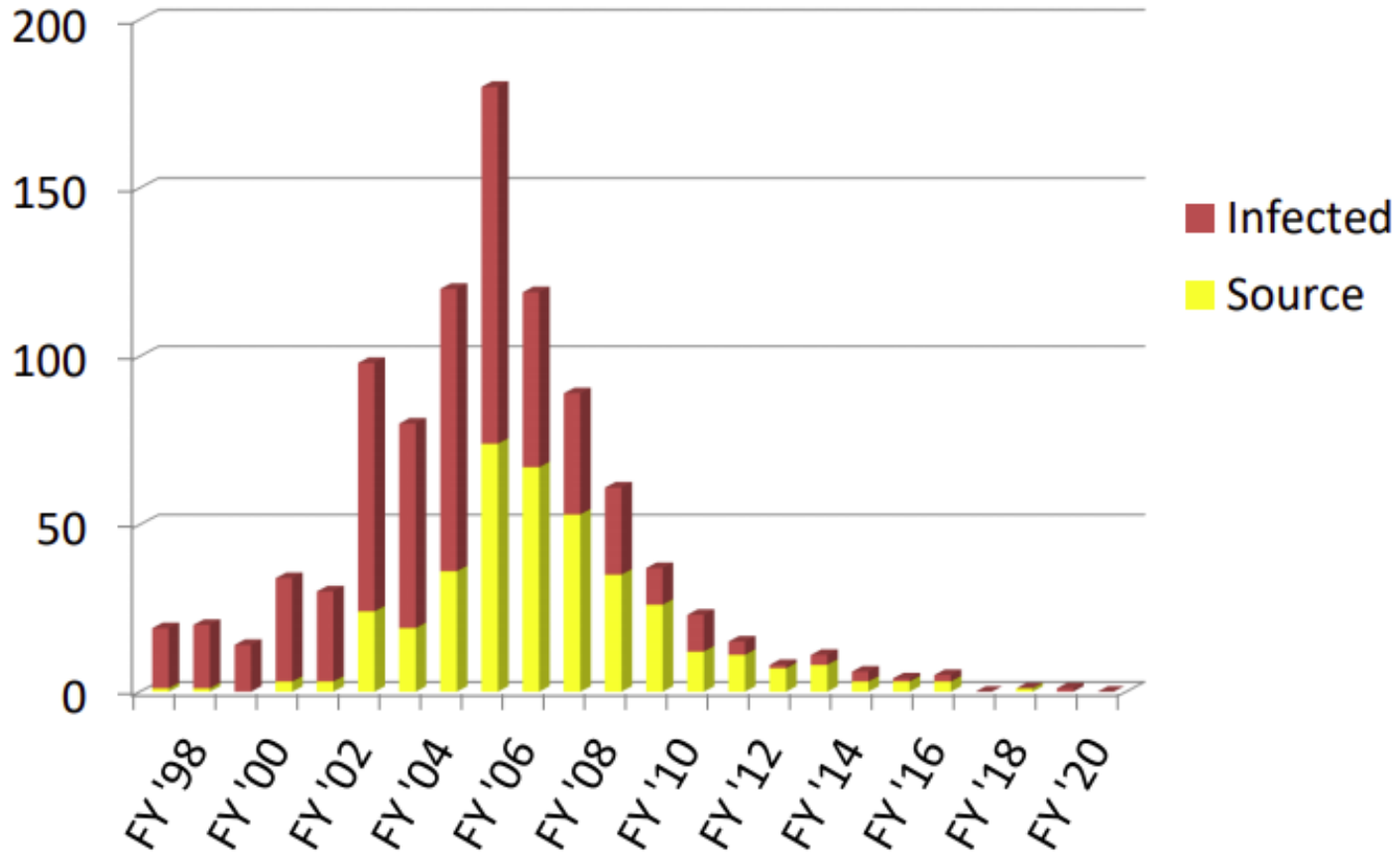
SCRAPIE

Where are we now?



Infected and Source Flocks

New Statuses by Year – Fiscal Years 1997 to 2020*

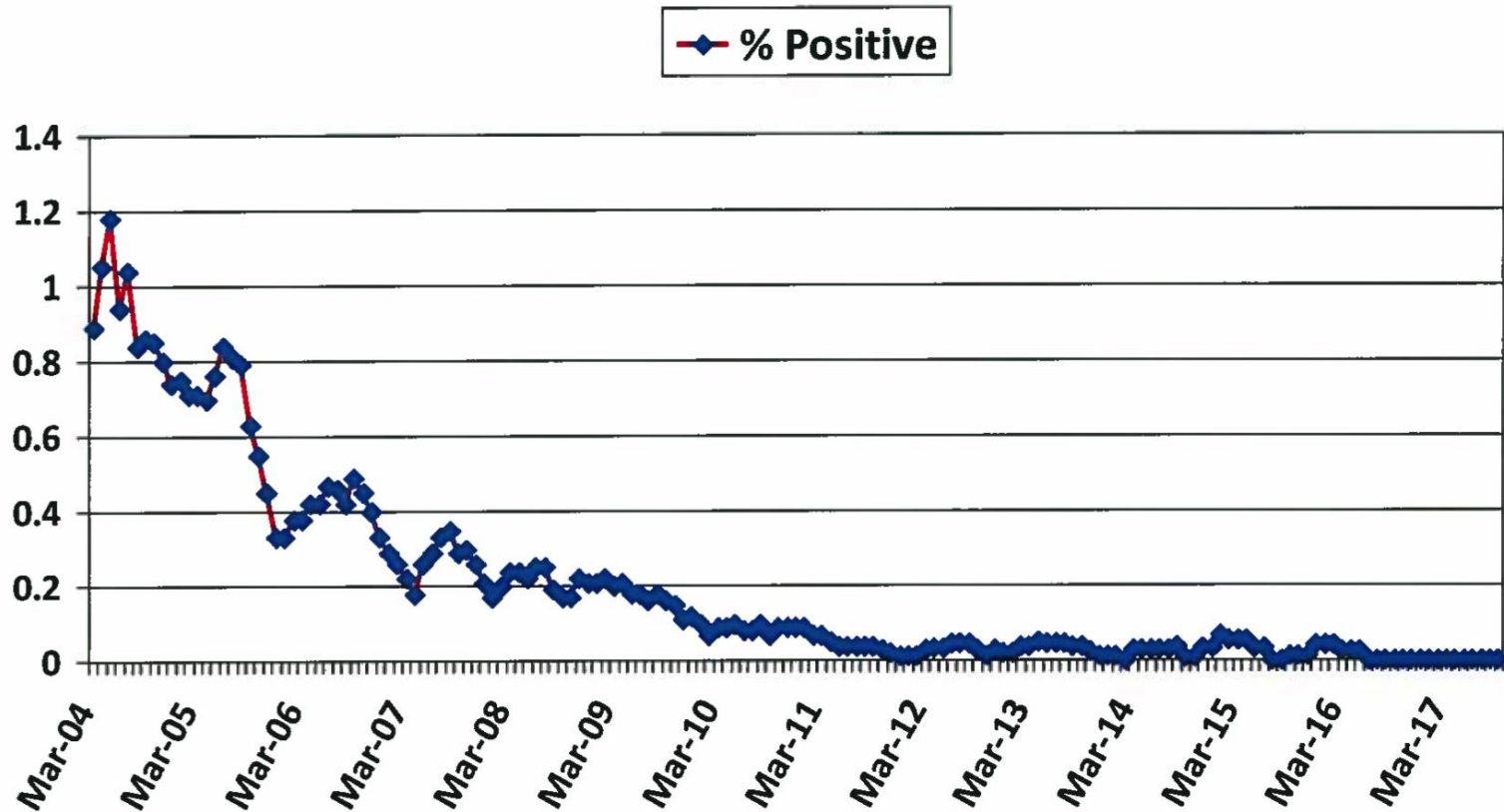


(Chart 3)



* As of July 31, 2020

Retrospective 6 Month Rolling Average of Percent Classical Scrapie Positive Black-Faced Cull Sheep Sampled at Slaughter*



(Chart 3)

* As of September 30, 2017. Includes only sheep with test results reported. Includes multiple positives from same flock.



SCRAPIE – Sampling Post-mortem

Whole head submissions can go to the Remington facility.

Use provided shippers and supplies, submission form (On-farm), return postage slip.

If no tag, apply one** but be sure animal is traceable!!!



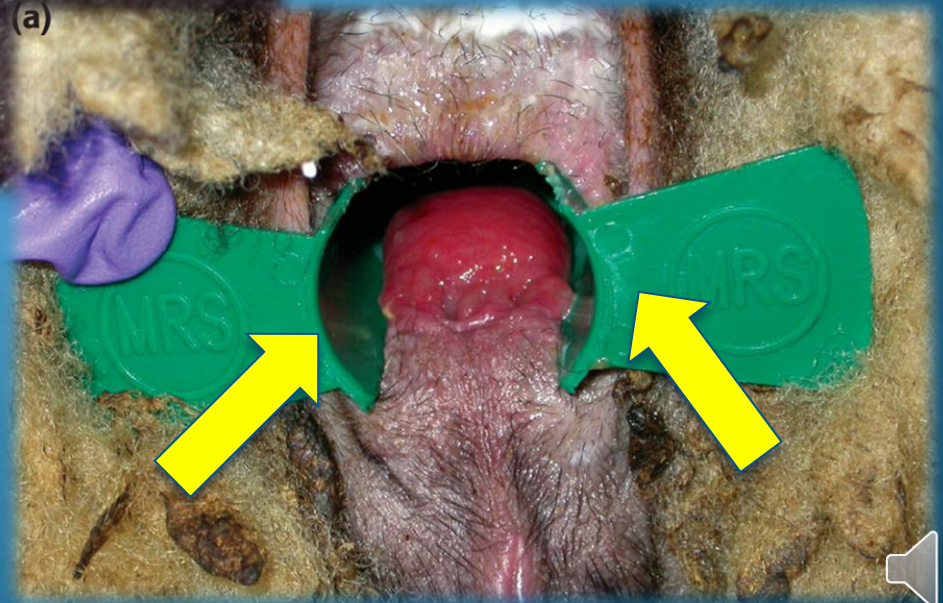
SCRAPIE – Sampling Live Animal



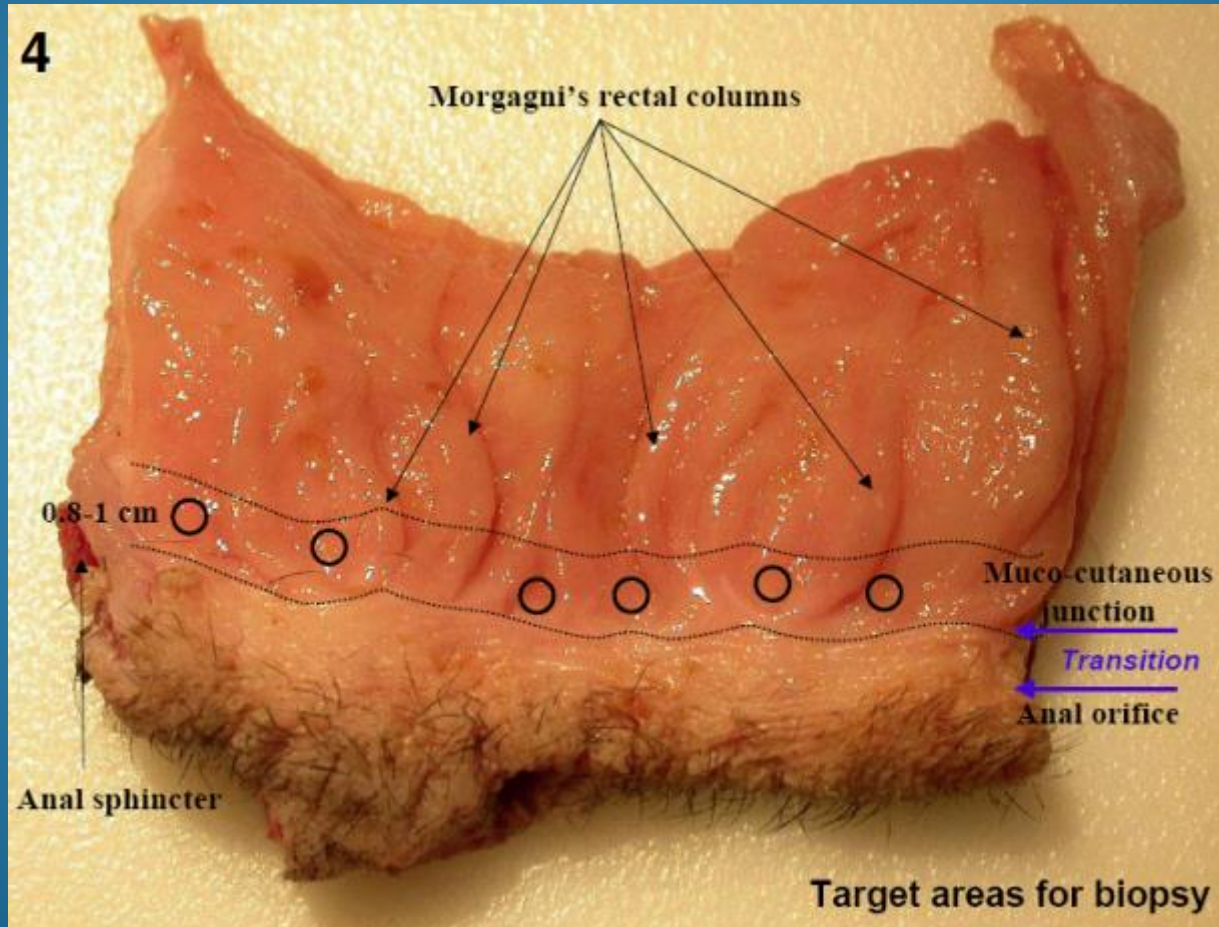
Sorry, it's not a blood test

3rd eyelid biopsy

Rectal biopsy
(preferred)



SCRAPIE – Rectal Biopsy



SCRAPIE – ID requirements & traceability



If it leaves your farm, TAG IT!

- Hawaii is rewriting our administrative rules and will be replacing our quarantine order with required identification.
- Exceptions to identification will be limited to animals going direct to slaughter (NO change of ownership).
- Sheep & Goats will both need to be officially identified to farm of origin. DC-44's will need to be issued.

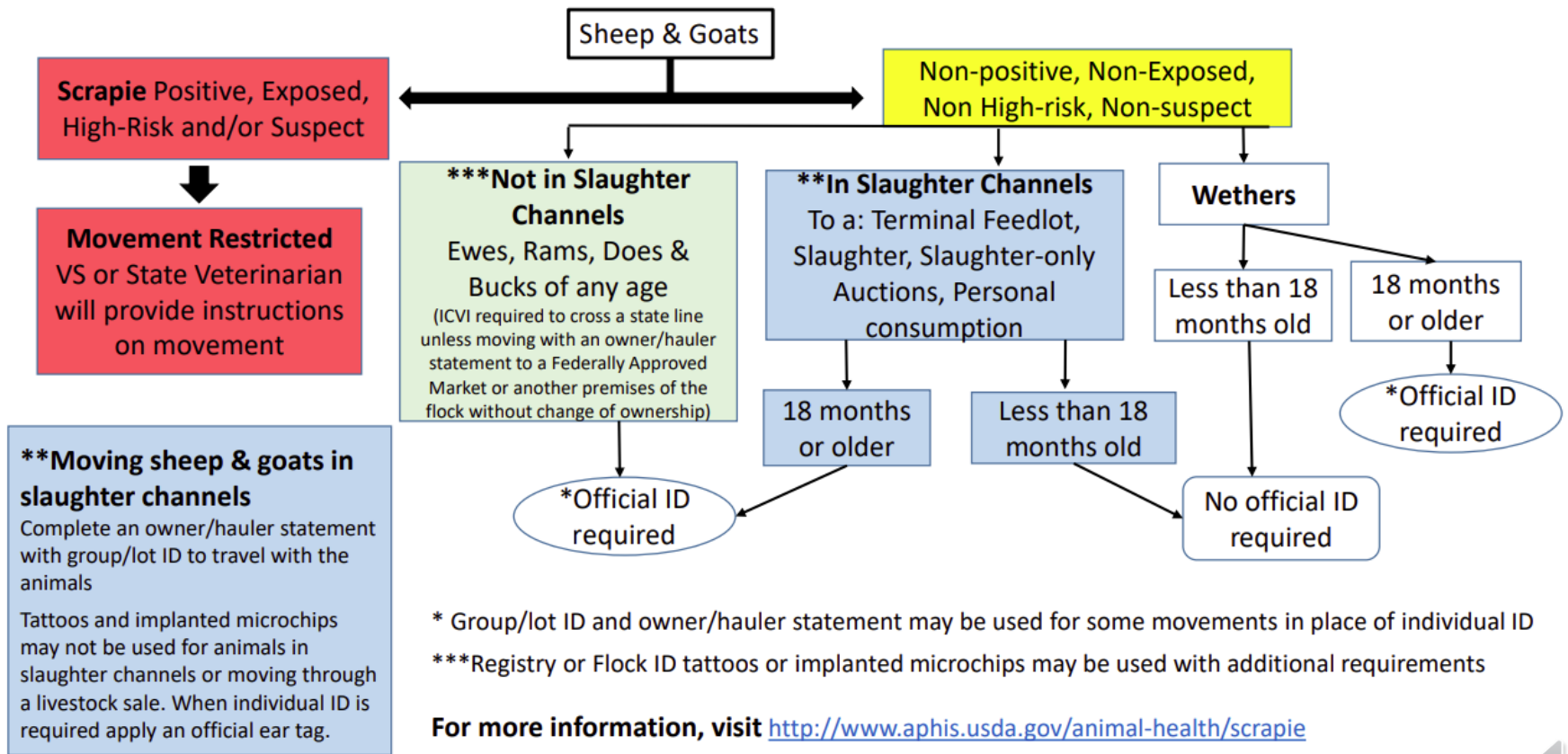


National Scrapie ID flowchart

SHEEP & GOAT Official Identification Decision Tree

4/10/19

Easiest = if it is leaving your farm, put in an official eartag (for some exceptions see below)



SCRAPIE – What is “official” ID?

USDA approved or provided ear tags – Look for shield

Registry Tattoos and EIDs - registration certificate required, only 840 EID's this includes 840 microchips. No other microchips allowed after 2015

Other tattoo's - Flock ID (state or national) with individual animal number

Official back tags for animals moving directly from their current location to slaughter – N/A in HI



Scrapie ID continued



- Official ID tags ALWAYS have a U.S. shield
- Official ID, including microchips have a unique number that are regulated by USDA. This helps trace animal movements.
- <http://usanimalid.com/idmethod.htm>
- <http://www.eradicatescrapie.org/State%20ID%20Requirements.html>

SCRAPIE – Tattoos



CLUN FOREST ASSOCIATION

This sheep has been duly recorded in the official pedigree records of the Association.

1/24/2002
Date
Elizabeth K. Reedy
Association Secretary

RAMBLE HILL G48 (tw)
G-00131

MELAND X4 (s)
00075 ROM

ILLY (tw)
00176

RAMBLE HILL A11 (tr)
A-00097 ROM

of Ownership Breeder
Bets Reedy
21727 Rendall Dr.
Houston, MN 55943

I have this ____ day of _____ 20 ____
sold the within-described Clun Forest Sheep to: _____
of _____

Signature of Vendor
This sale has been officially recorded



Can sheep & goats be moved INTRAstate without official ID?

States determine intrastate requirements; however, all States must implement intrastate ID to be a consistent state.

If an animal has changed hands **INTRA** state and it cannot be identified to its flock of origin and in some cases birth, it **cannot** be moved **INTER** state except as allowed in CFR 79.6.



So what is CFR 79.6?

CFR 79.6 allows states to exempt certain classes of animals from intrastate ID IF; scrapie has not been identified in the state and no exposed flock exists in the state.

commercial goats

commercial white faced sheep

commercial hair sheep



SAMPLING GOALS FY 20

Sheep – 105 (99)

Goats – 40 (4)

() = obtained as of 9/14/20



SCRAPIE – Questions?

