



College of Tropical Agriculture and Human Resources
University of Hawai'i at Mānoa

Small Ruminant Health Evaluation for Parasites

2020 University of Hawaii at Manoa
College of Tropical Agriculture and Human Resources
Virtual Livestock Industry Field Day

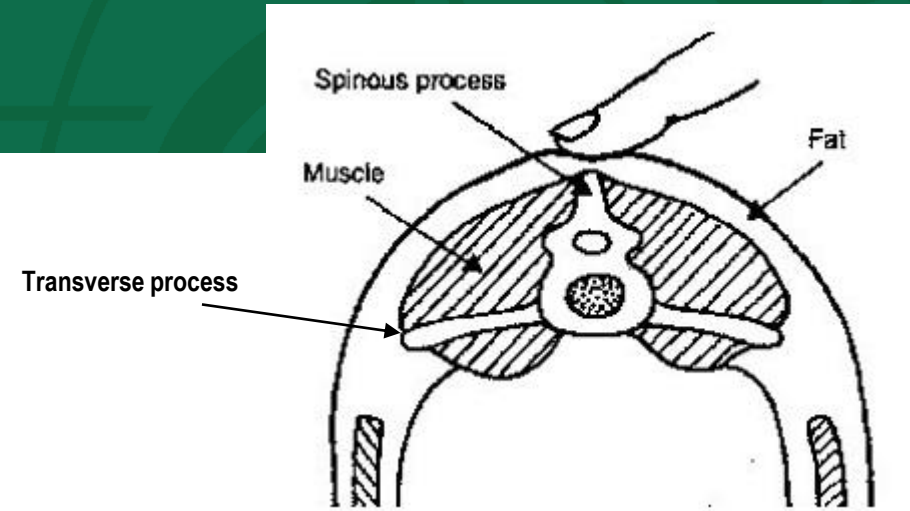
Jenee S. Odani, DVM, DACVP
UH Manoa/CTAHR/HNFAS
Extension Veterinarian





Five-point check for health

1. body condition scoring



Score	Spinous Process	Transverse Process	Loin Eye Muscle	Fat Cover Over Loin Eye Muscle
1	sharp and prominent	sharp	shallow	none
2	sharp and prominent	smooth, lightly rounded	medium depth	little
3	smooth and rounded	smooth, well-covered	full	medium
4	palpable as firm line with pressure	not palpable	full	thick
5	not palpable	not palpable	very full	very thick

Images: Ewe Lamb Nutrition, Susan Schoenian, UMD, NCAT/WSARE
Table: Sheep & Goat Medicine, Pugh & Baird, 2012. Elsevier Inc.





BCS 1/5

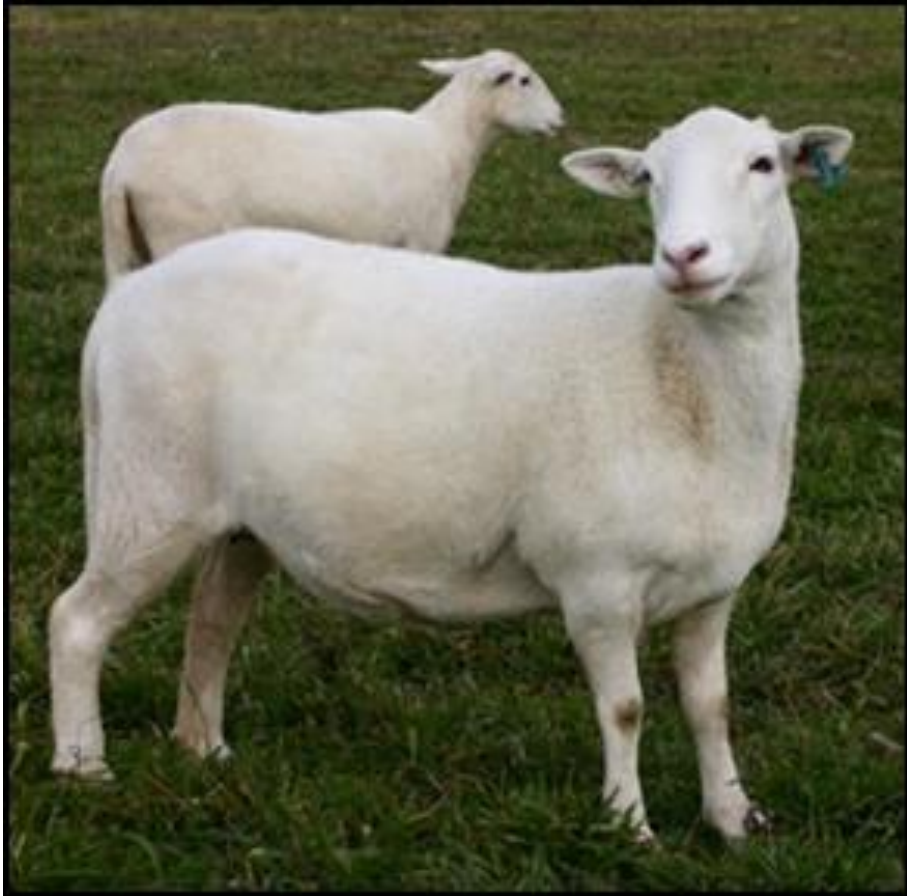


BCS 2/5





BCS 3/5





BCS 4/5



BCS 5/5





Five-point check for health

2. Jaw swelling (edema)

- “bottle jaw”
- Can be a symptom of parasitism





Five-point check for health

3. diarrhea (“dags”)

- Can see soiling of the britches area
- Not specific for internal parasites

What are dags?

- Dried feces left dangling on the wool on a sheep's rear end.

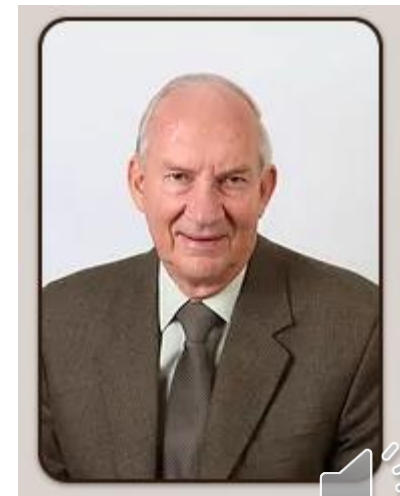
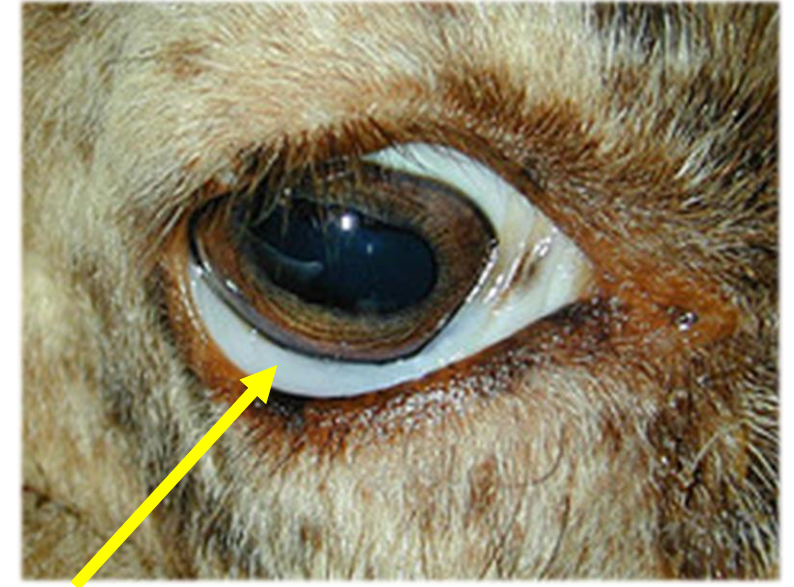




Five-point check for health

4. FAMACHA (eye) score

- Francois “**F**affa” **M**alan **C**hart
- Evaluate level of anemia
 - Evaluates level of Barber Pole Worm infection
 - (1 & 2) good
 - (3) treat if there are other indications
 - (4) treat
 - (5) treat, this animal is critically ill





https://web.uri.edu/sheepngoat/files/FAMACHA-Scoring_Final2.pdf





Five-point check for health

5. nasal discharge or coat appearance.





Specific tests for internal parasites

- Fecal examination
- Fecal egg count
- Fecal egg count reduction test (FECRT)
- Drench-Rite assay for dewormer resistance





Fecal examination (qualitative, with limits)

- Easy to perform
- Tells you what type of parasites your animal has
- Tells you relative numbers
- Limitations:
 - Many of the common parasite eggs look alike (many of the Strongyles)





Fecal egg count (FEC)

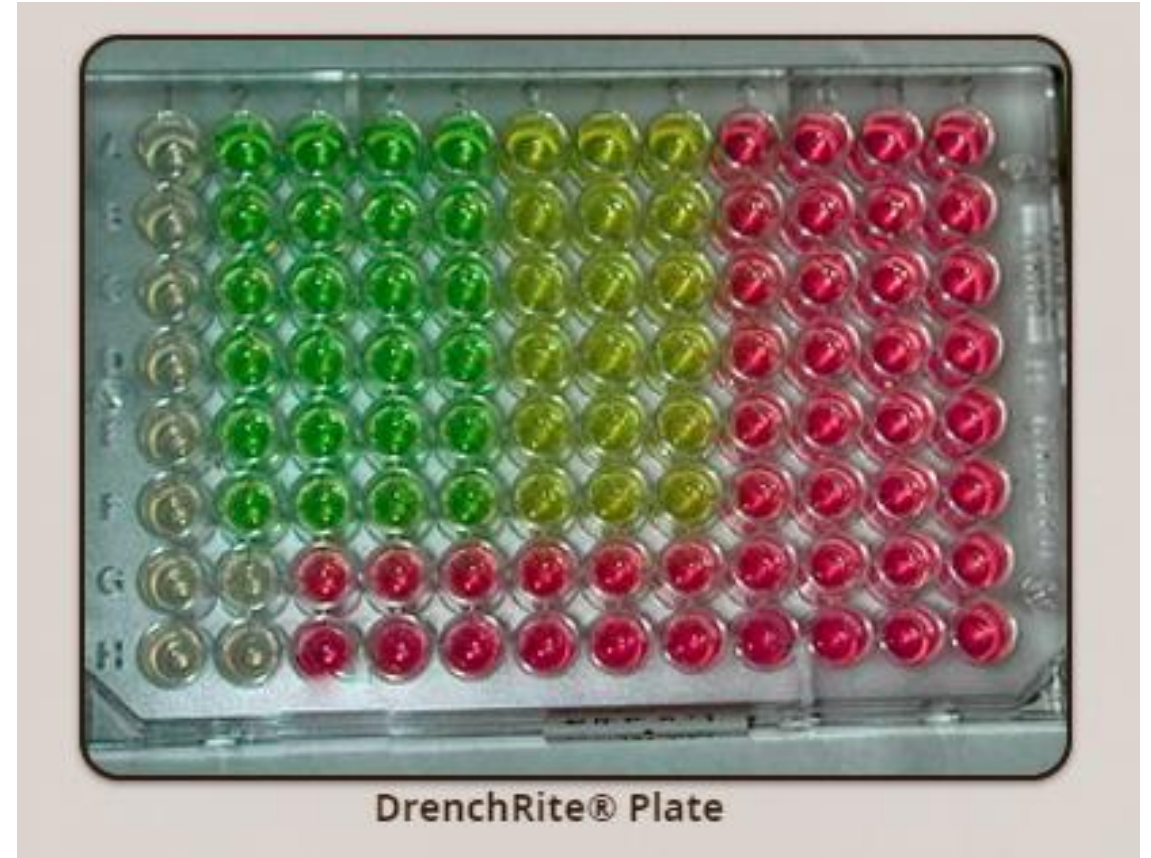
- Determines the # of eggs/gram
 - Strongyle eggs
 - Strongyloides
 - Tapeworm
 - Other
- Fecal egg count reduction test (FECRT)
 - To determine efficacy of your deworming
 - Repeat the FEC 10-14 days after the last dewormer





Larval Development Assay

- Drench-Rite assay
- To detect dewormer resistance
- Focuses on the Barber Pole worm
- Herd level test
- Feces cannot touch the ground/
plants before collection





Useful websites

- <https://www.wormx.info/> (American Consortium for Small Ruminant Parasite Control)
- <https://web.uri.edu/sheepngoat/famacha/> (online FAMACHA certification)

