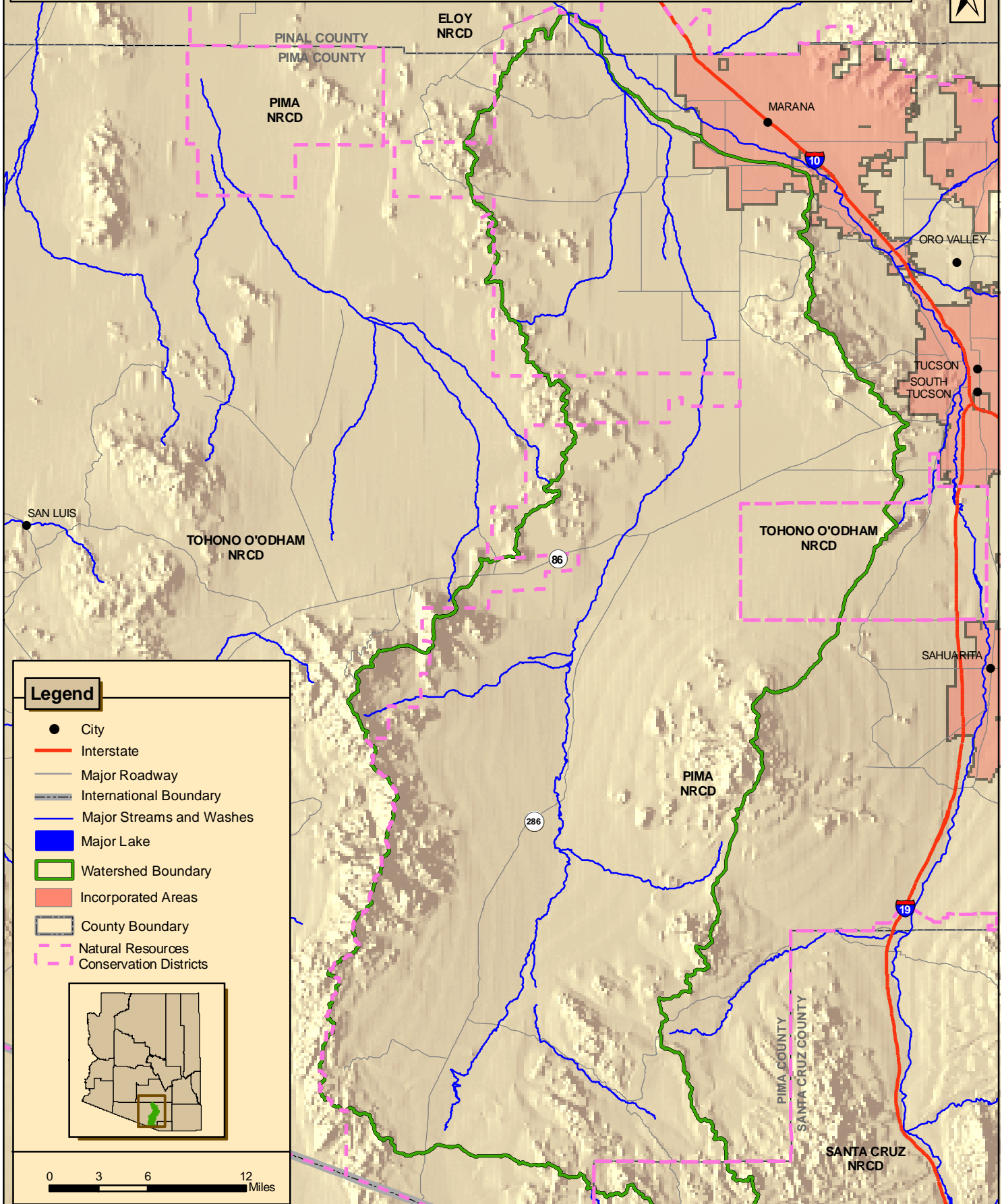
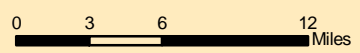
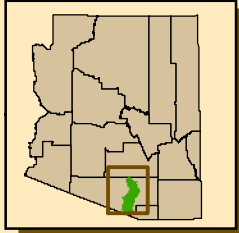


Figure 1-1: Brawley Wash - Los Robles Wash Watershed Location Map



**Legend**

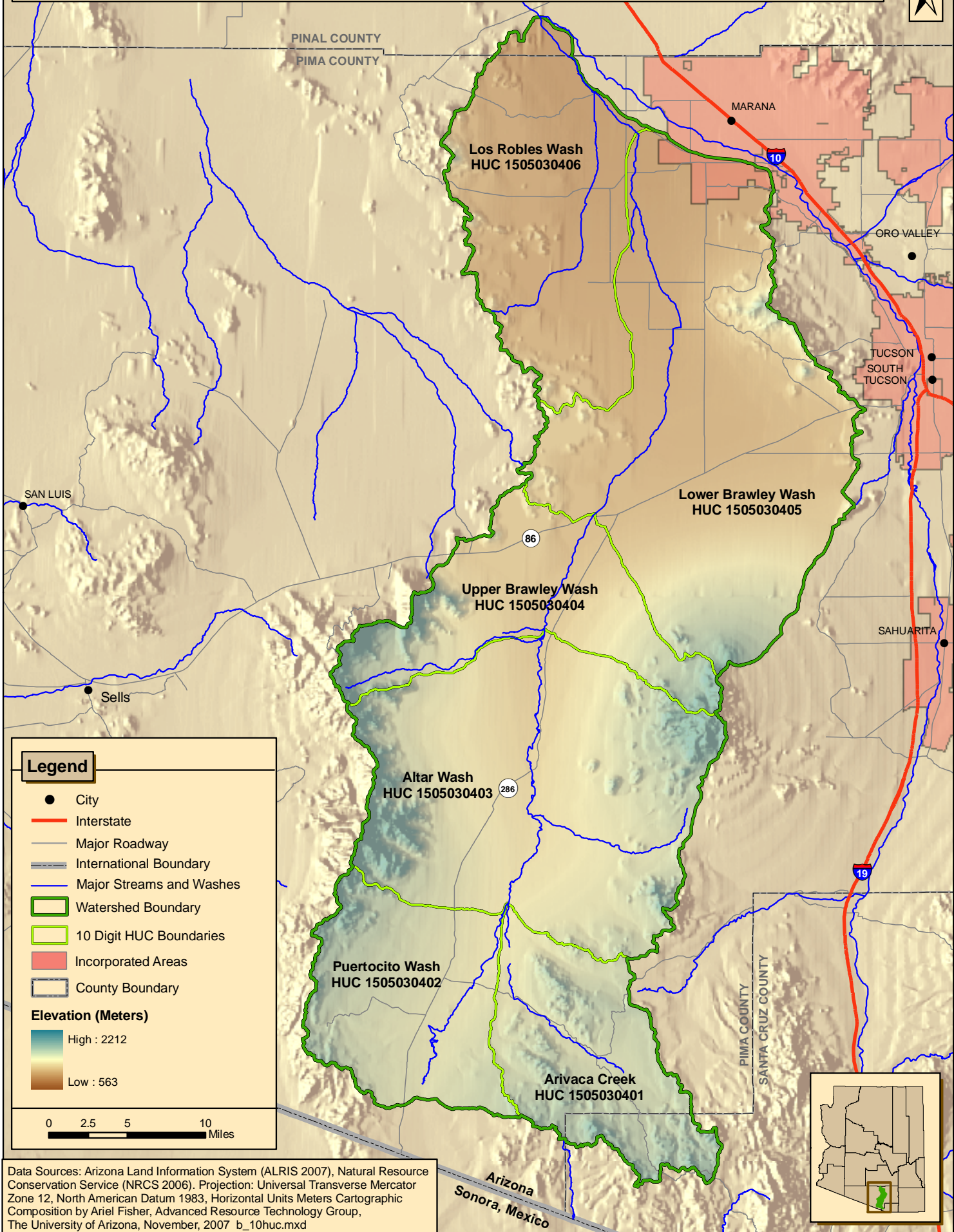
- City
- Interstate
- Major Roadway
- International Boundary
- Major Streams and Washes
- Major Lake
- ▭ Watershed Boundary
- Incorporated Areas
- ▭ County Boundary
- ▭ Natural Resources Conservation Districts



Data Sources: Arizona Land Information System (ALRIS 2007), Natural Resource Conservation Service (NRCS 2006). Projection: Universal Transverse Mercator Zone 12, North American Datum 1983, Horizontal Units Meters Cartographic Composition by Ariel Fisher, Advanced Resource Technology Group, The University of Arizona, November, 2007 b\_location.mxd

Arizona  
Sonora, Mexico

Figure 2-1: Brawley Wash - Los Robles Wash Watershed 10 Digit HUCs

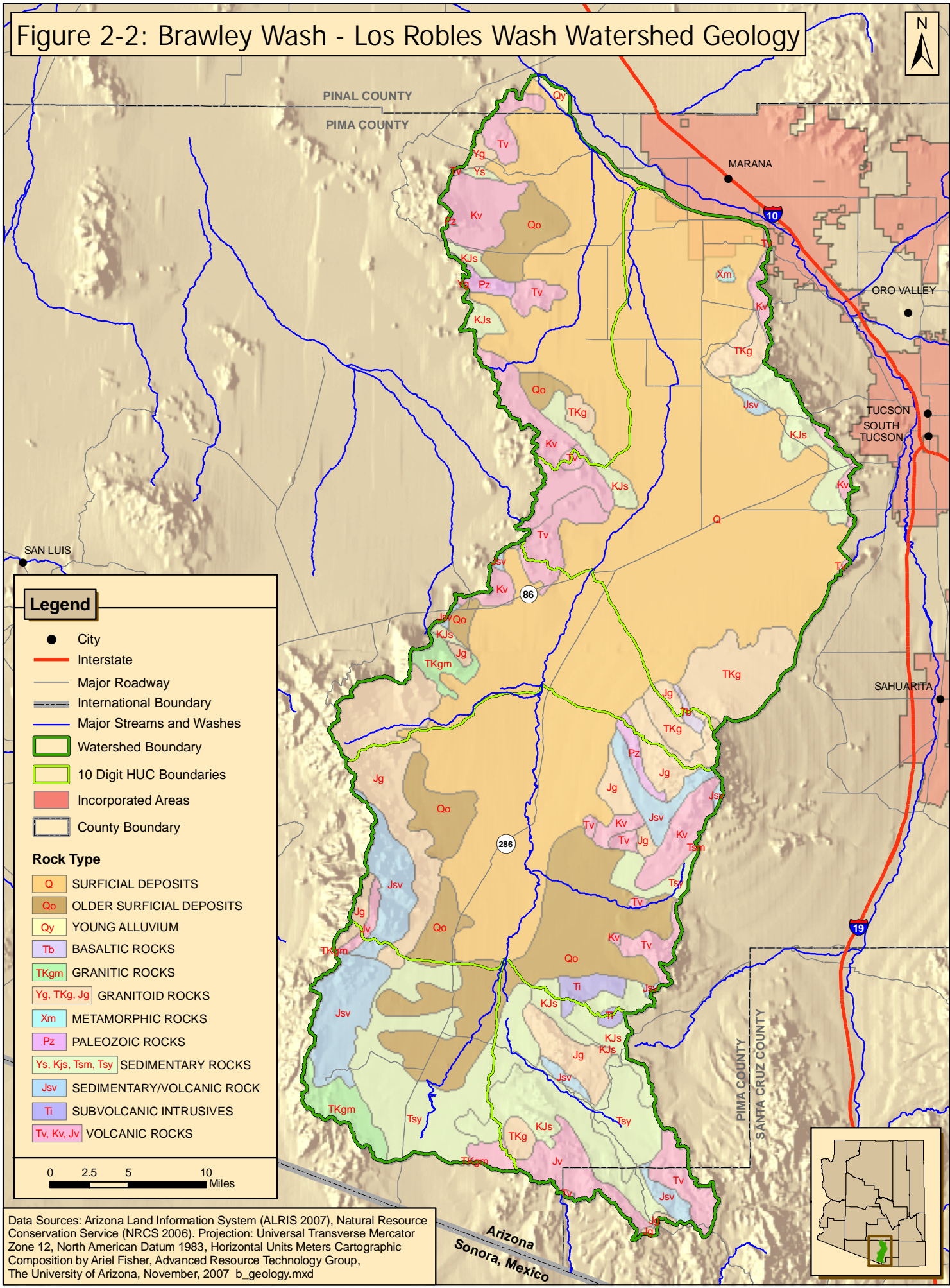


Data Sources: Arizona Land Information System (ALRIS 2007), Natural Resource Conservation Service (NRCS 2006). Projection: Universal Transverse Mercator Zone 12, North American Datum 1983, Horizontal Units Meters Cartographic Composition by Ariel Fisher, Advanced Resource Technology Group, The University of Arizona, November, 2007 b\_10huc.mxd

Arizona  
Sonora, Mexico



Figure 2-2: Brawley Wash - Los Robles Wash Watershed Geology

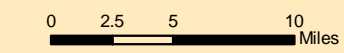


**Legend**

- City
- Interstate
- Major Roadway
- International Boundary
- Major Streams and Washes
- ▭ Watershed Boundary
- ▭ 10 Digit HUC Boundaries
- ▭ Incorporated Areas
- ▭ County Boundary

**Rock Type**

- Q SURFICIAL DEPOSITS
- Qo OLDER SURFICIAL DEPOSITS
- Qy YOUNG ALLUVIUM
- Tb BASALTIC ROCKS
- TKgm GRANITIC ROCKS
- Yg, TKg, Jg GRANITOID ROCKS
- Xm METAMORPHIC ROCKS
- Pz PALEOZOIC ROCKS
- Ys, Kjs, Tsm, Tsy SEDIMENTARY ROCKS
- Jsv SEDIMENTARY/VOLCANIC ROCK
- Ti SUBVOLCANIC INTRUSIVES
- Tv, Kv, Jv VOLCANIC ROCKS



Data Sources: Arizona Land Information System (ALRIS 2007), Natural Resource Conservation Service (NRCS 2006). Projection: Universal Transverse Mercator Zone 12, North American Datum 1983. Horizontal Units Meters Cartographic Composition by Ariel Fisher, Advanced Resource Technology Group, The University of Arizona, November, 2007 b\_geology.mxd

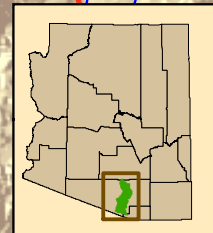
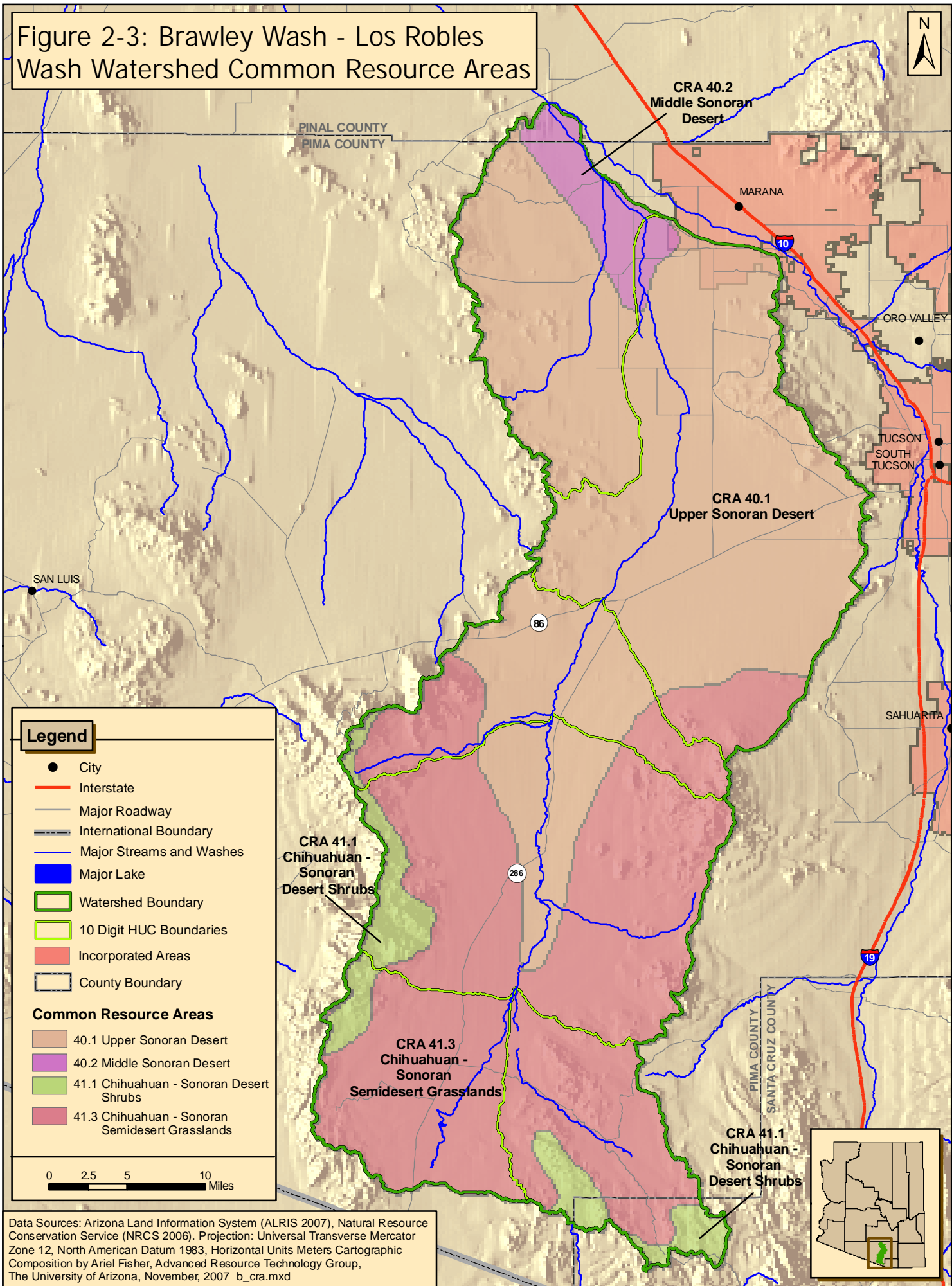


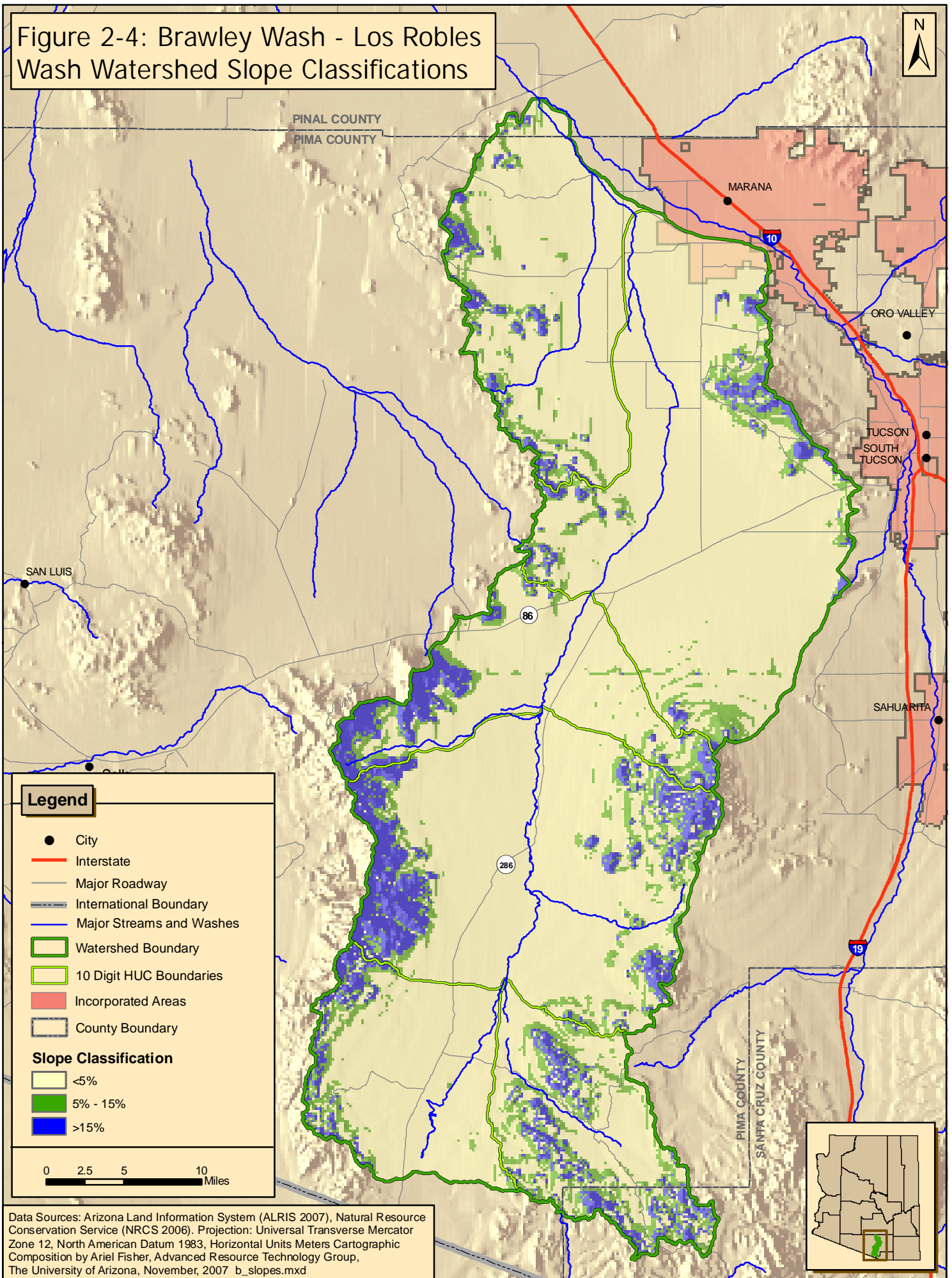
Figure 2-3: Brawley Wash - Los Robles Wash Watershed Common Resource Areas



Data Sources: Arizona Land Information System (ALRIS 2007), Natural Resource Conservation Service (NRCS 2006). Projection: Universal Transverse Mercator Zone 12, North American Datum 1983, Horizontal Units Meters Cartographic Composition by Ariel Fisher, Advanced Resource Technology Group, The University of Arizona, November, 2007 b\_cra.mxd

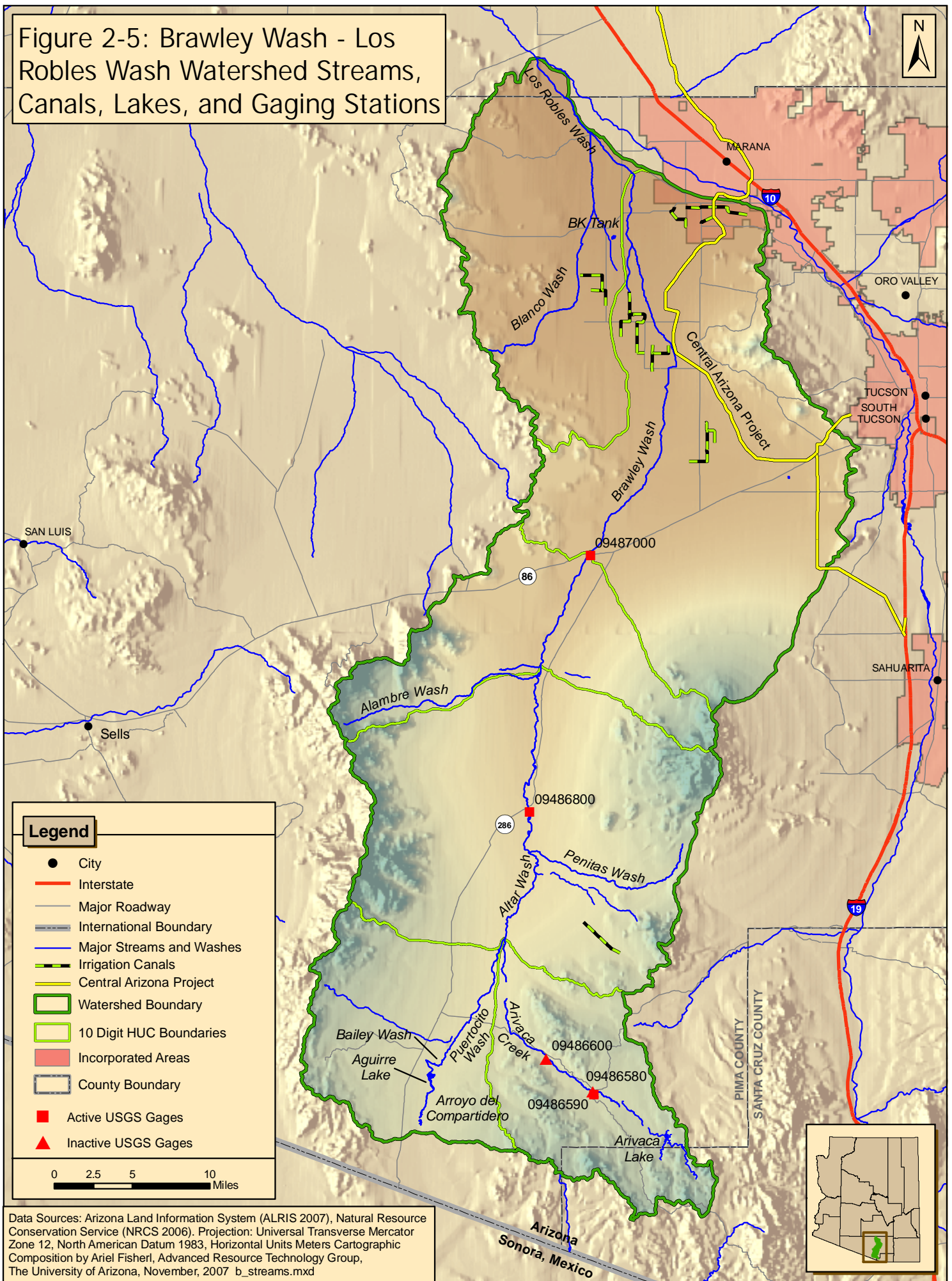


Figure 2-4: Brawley Wash - Los Robles Wash Watershed Slope Classifications



Data Sources: Arizona Land Information System (ALRIS 2007), Natural Resource Conservation Service (NRCS 2006). Projection: Universal Transverse Mercator Zone 12, North American Datum 1983, Horizontal Units Meters Cartographic Composition by Ariel Fisher, Advanced Resource Technology Group, The University of Arizona, November, 2007 b\_slopes.mxd

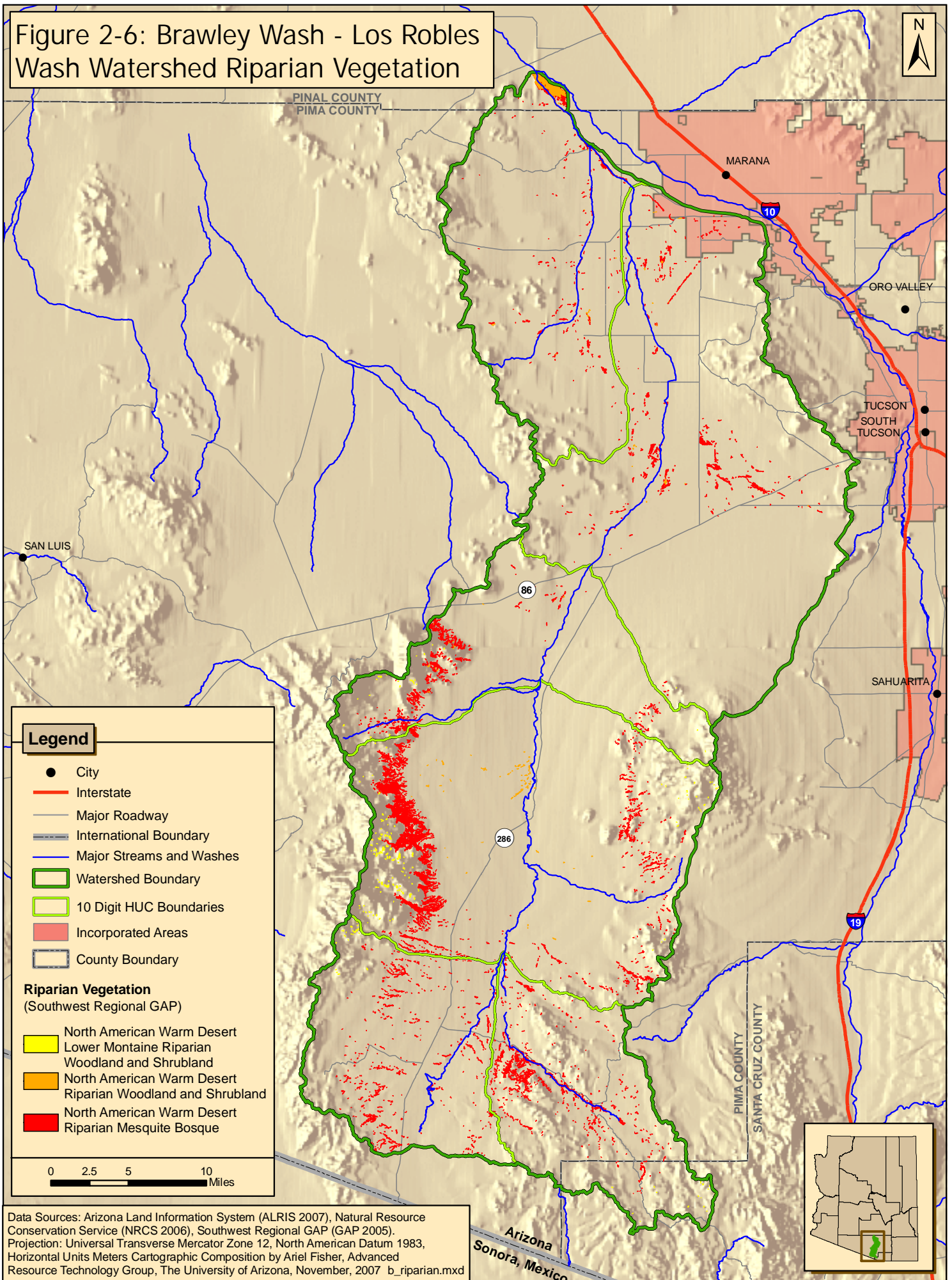
Figure 2-5: Brawley Wash - Los Robles Wash Watershed Streams, Canals, Lakes, and Gaging Stations



Data Sources: Arizona Land Information System (ALRIS 2007), Natural Resource Conservation Service (NRCS 2006). Projection: Universal Transverse Mercator Zone 12, North American Datum 1983, Horizontal Units Meters Cartographic Composition by Ariel Fisher, Advanced Resource Technology Group, The University of Arizona, November, 2007 b\_streams.mxd



Figure 2-6: Brawley Wash - Los Robles Wash Watershed Riparian Vegetation



**Legend**

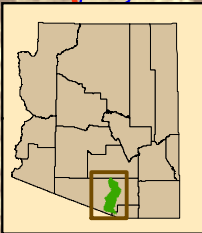
- City
- Interstate
- Major Roadway
- International Boundary
- Major Streams and Washes
- Watershed Boundary
- 10 Digit HUC Boundaries
- Incorporated Areas
- County Boundary

**Riparian Vegetation**  
(Southwest Regional GAP)

- North American Warm Desert Lower Montaine Riparian Woodland and Shrubland
- North American Warm Desert Riparian Woodland and Shrubland
- North American Warm Desert Riparian Mesquite Bosque

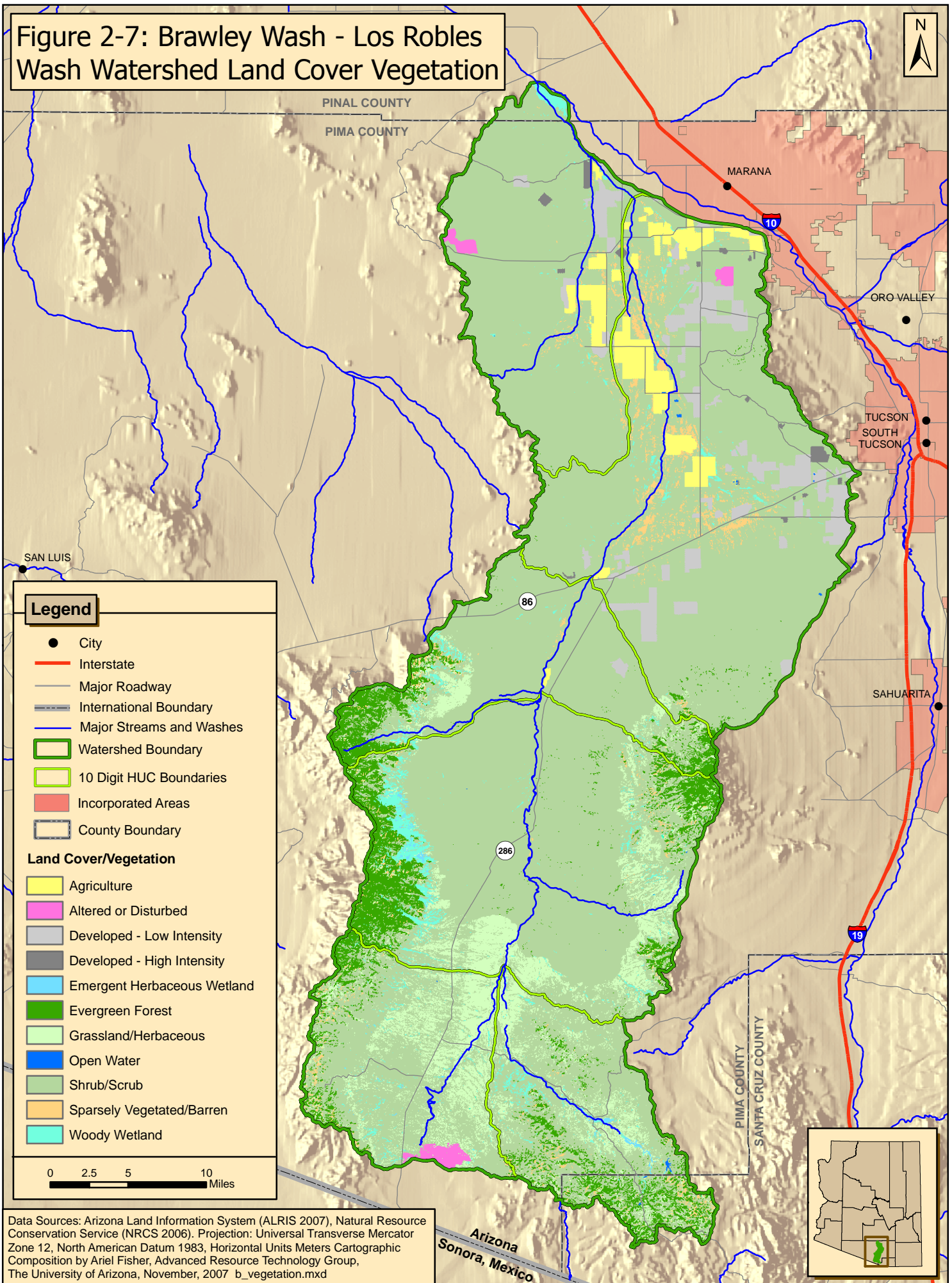
0 2.5 5 10 Miles

Data Sources: Arizona Land Information System (ALRIS 2007), Natural Resource Conservation Service (NRCS 2006), Southwest Regional GAP (GAP 2005).  
 Projection: Universal Transverse Mercator Zone 12, North American Datum 1983,  
 Horizontal Units Meters Cartographic Composition by Ariel Fisher, Advanced  
 Resource Technology Group, The University of Arizona, November, 2007 b\_riparian.mxd





**Figure 2-7: Brawley Wash - Los Robles Wash Watershed Land Cover Vegetation**



**Legend**

- City
- Interstate
- Major Roadway
- International Boundary
- Major Streams and Washes
- ▭ Watershed Boundary
- ▭ 10 Digit HUC Boundaries
- ▭ Incorporated Areas
- ▭ County Boundary

**Land Cover/Vegetation**

- ▭ Agriculture
- ▭ Altered or Disturbed
- ▭ Developed - Low Intensity
- ▭ Developed - High Intensity
- ▭ Emergent Herbaceous Wetland
- ▭ Evergreen Forest
- ▭ Grassland/Herbaceous
- ▭ Open Water
- ▭ Shrub/Scrub
- ▭ Sparsely Vegetated/Barren
- ▭ Woody Wetland



Data Sources: Arizona Land Information System (ALRIS 2007), Natural Resource Conservation Service (NRCS 2006). Projection: Universal Transverse Mercator Zone 12, North American Datum 1983, Horizontal Units Meters Cartographic Composition by Ariel Fisher, Advanced Resource Technology Group, The University of Arizona, November, 2007 b\_vegetation.mxd

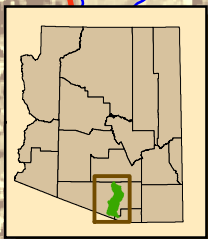
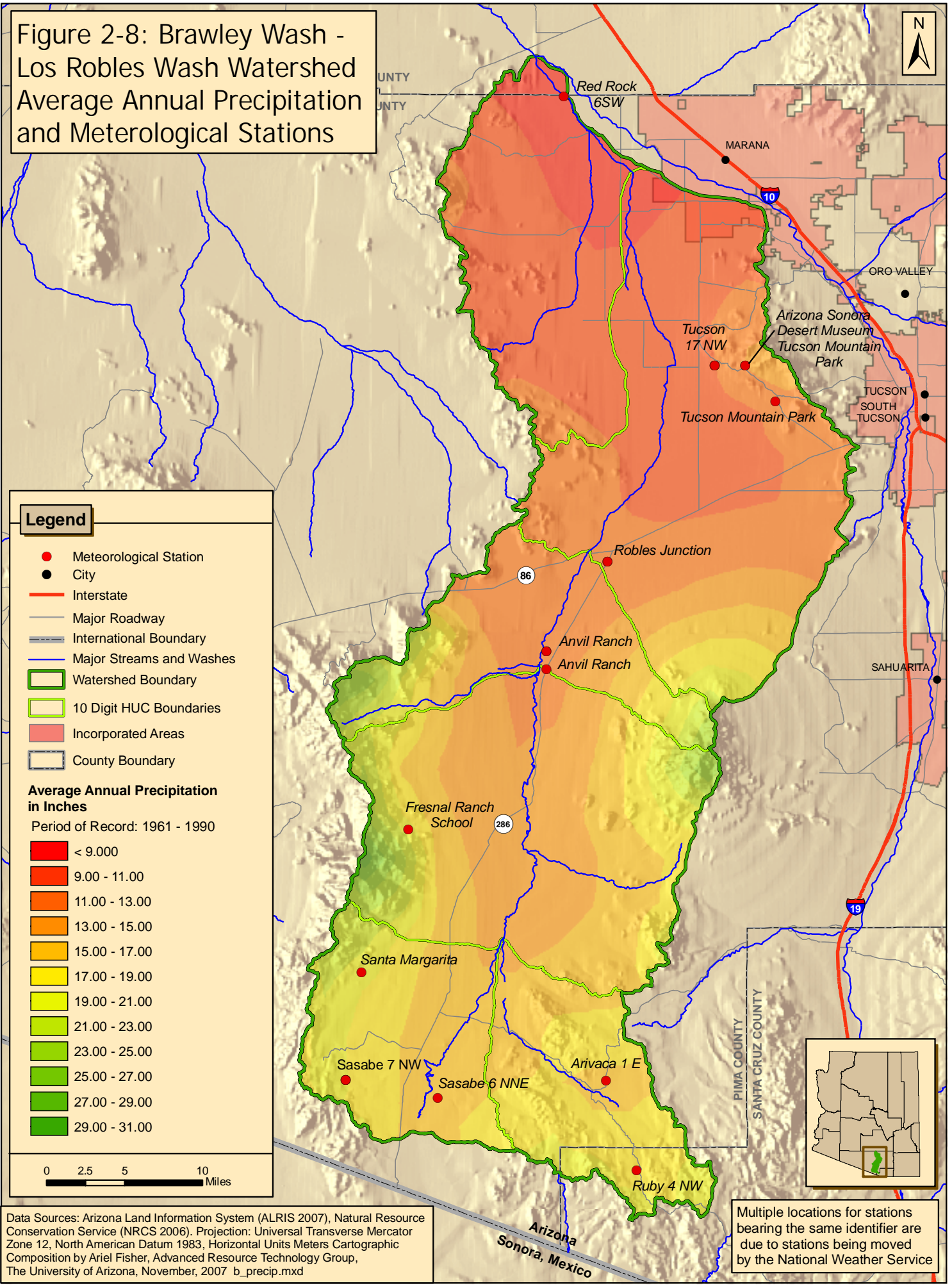




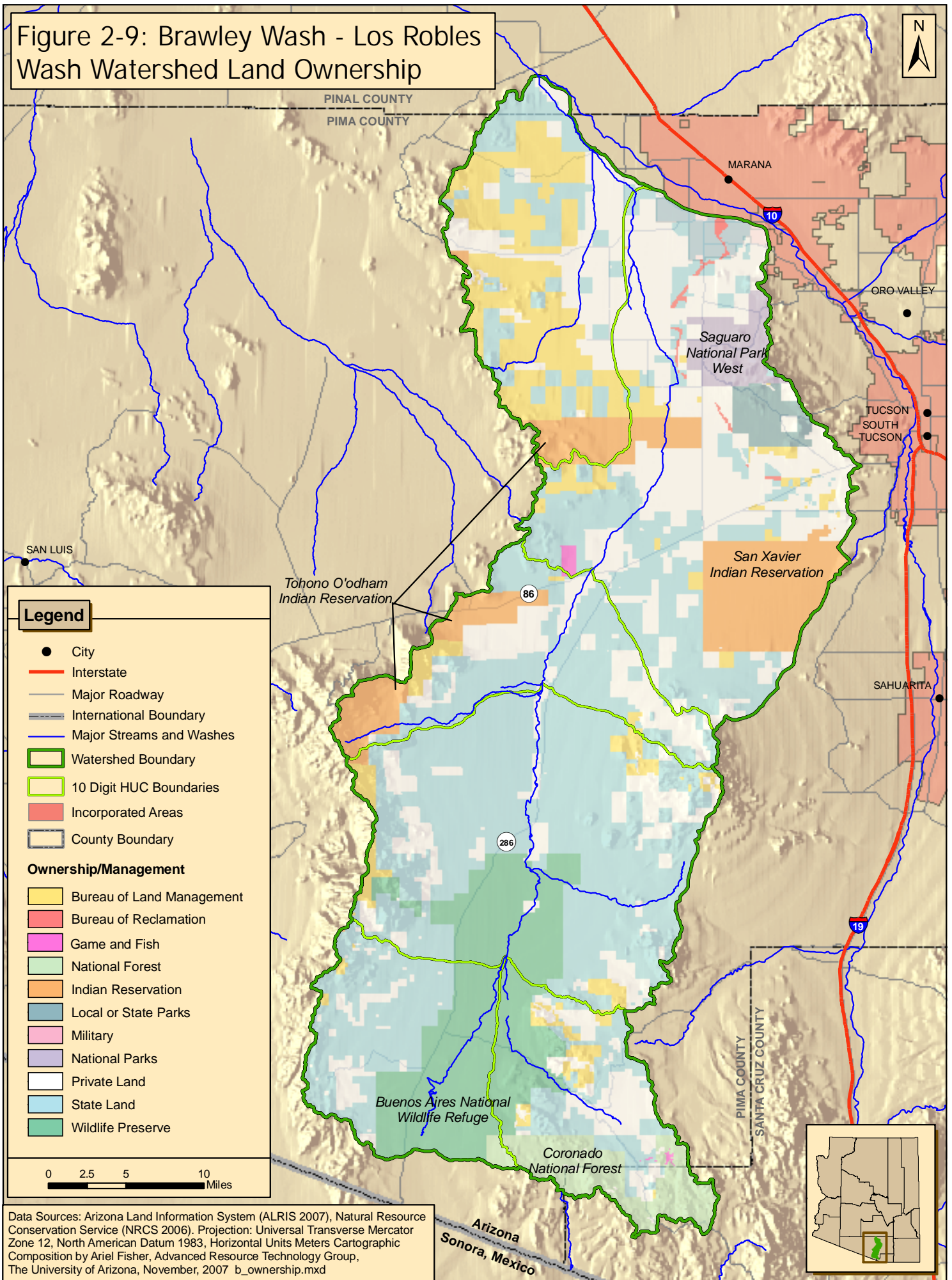
Figure 2-8: Brawley Wash - Los Robles Wash Watershed Average Annual Precipitation and Meterological Stations



Data Sources: Arizona Land Information System (ALRIS 2007), Natural Resource Conservation Service (NRCS 2006). Projection: Universal Transverse Mercator Zone 12, North American Datum 1983, Horizontal Units Meters Cartographic Composition by Ariel Fisher, Advanced Resource Technology Group, The University of Arizona, November, 2007 b\_precip.mxd

Multiple locations for stations bearing the same identifier are due to stations being moved by the National Weather Service

Figure 2-9: Brawley Wash - Los Robles Wash Watershed Land Ownership



**Legend**

- City
- Interstate
- Major Roadway
- International Boundary
- Major Streams and Washes
- Watershed Boundary
- 10 Digit HUC Boundaries
- Incorporated Areas
- County Boundary

**Ownership/Management**

- Bureau of Land Management
- Bureau of Reclamation
- Game and Fish
- National Forest
- Indian Reservation
- Local or State Parks
- Military
- National Parks
- Private Land
- State Land
- Wildlife Preserve

0 2.5 5 10 Miles

Data Sources: Arizona Land Information System (ALRIS 2007), Natural Resource Conservation Service (NRCS 2006). Projection: Universal Transverse Mercator Zone 12, North American Datum 1983, Horizontal Units Meters Cartographic Composition by Ariel Fisher, Advanced Resource Technology Group, The University of Arizona, November, 2007 b\_ownership.mxd

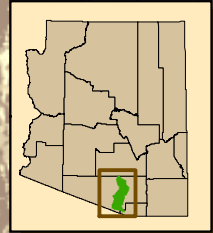
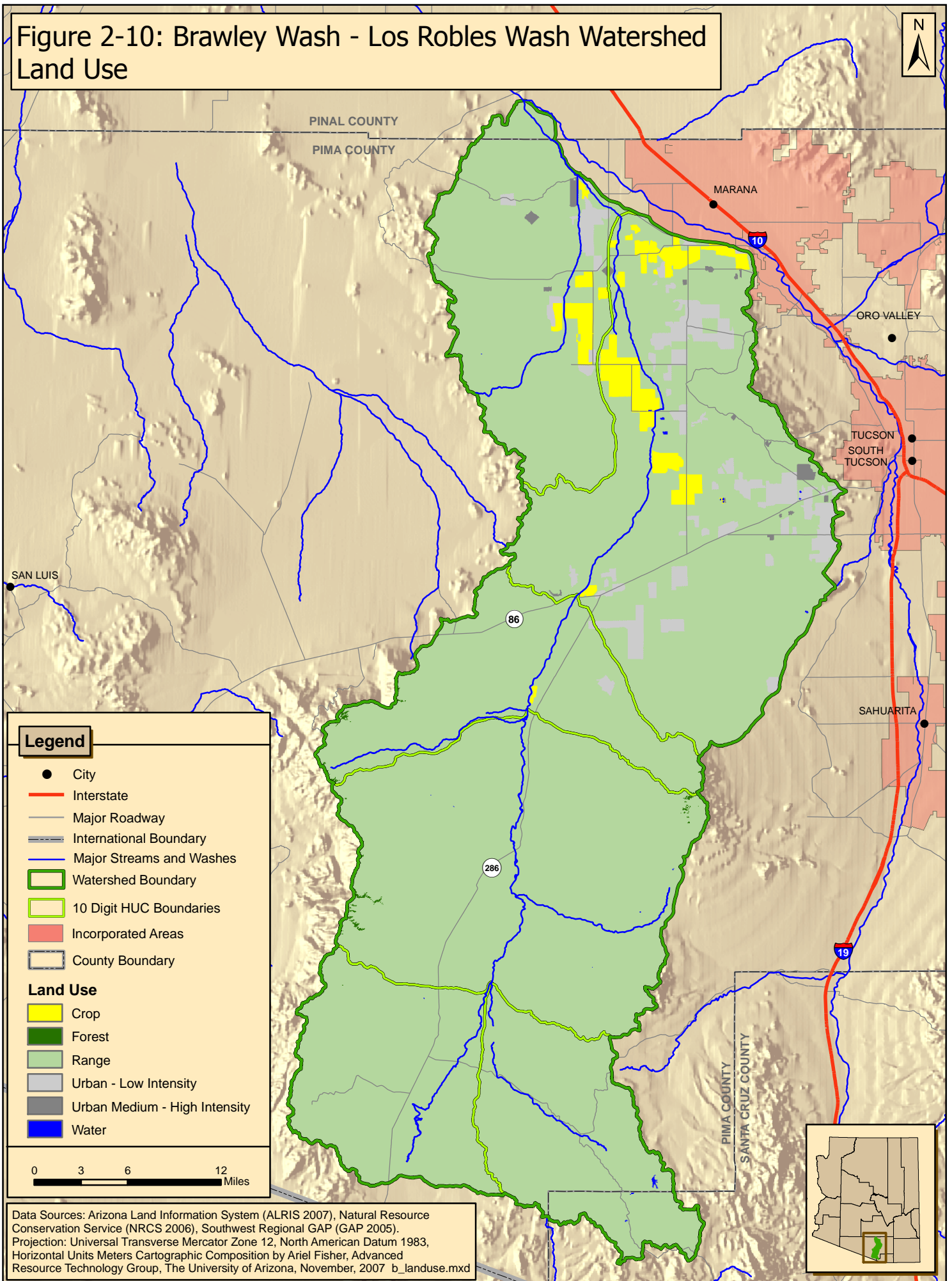




Figure 2-10: Brawley Wash - Los Robles Wash Watershed Land Use



**Legend**

- City
- Interstate
- Major Roadway
- International Boundary
- Major Streams and Washes
- Watershed Boundary
- 10 Digit HUC Boundaries
- Incorporated Areas
- County Boundary

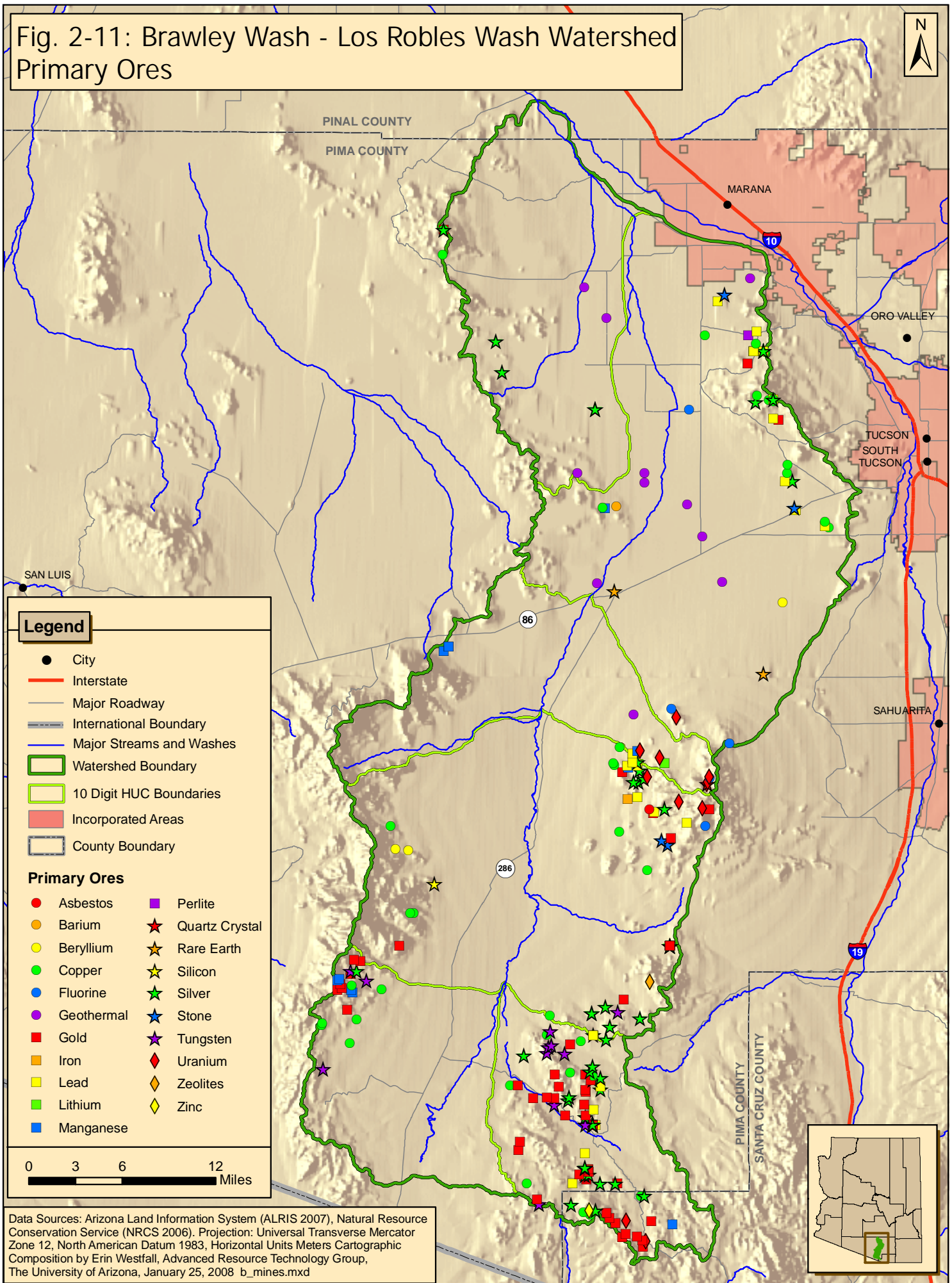
**Land Use**

- Crop
- Forest
- Range
- Urban - Low Intensity
- Urban Medium - High Intensity
- Water

0 3 6 12 Miles

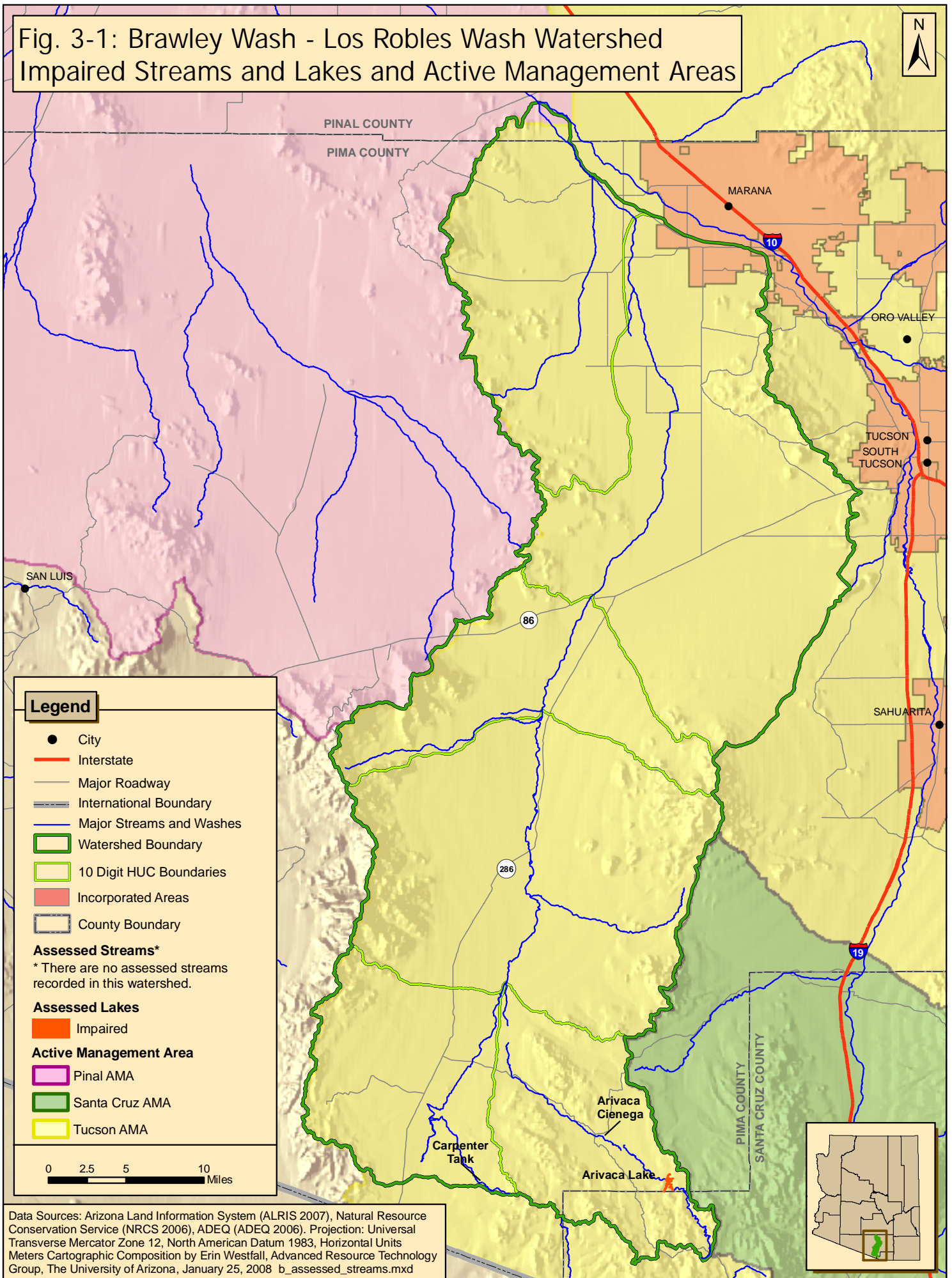
Data Sources: Arizona Land Information System (ALRIS 2007), Natural Resource Conservation Service (NRCS 2006), Southwest Regional GAP (GAP 2005).  
 Projection: Universal Transverse Mercator Zone 12, North American Datum 1983,  
 Horizontal Units Meters Cartographic Composition by Ariel Fisher, Advanced Resource Technology Group, The University of Arizona, November, 2007\_b\_landuse.mxd

Fig. 2-11: Brawley Wash - Los Robles Wash Watershed  
Primary Ores





**Fig. 3-1: Brawley Wash - Los Robles Wash Watershed Impaired Streams and Lakes and Active Management Areas**



**Legend**

- City
- Interstate
- Major Roadway
- International Boundary
- Major Streams and Washes
- ▭ Watershed Boundary
- ▭ 10 Digit HUC Boundaries
- ▭ Incorporated Areas
- ▭ County Boundary

**Assessed Streams\***  
 \* There are no assessed streams recorded in this watershed.

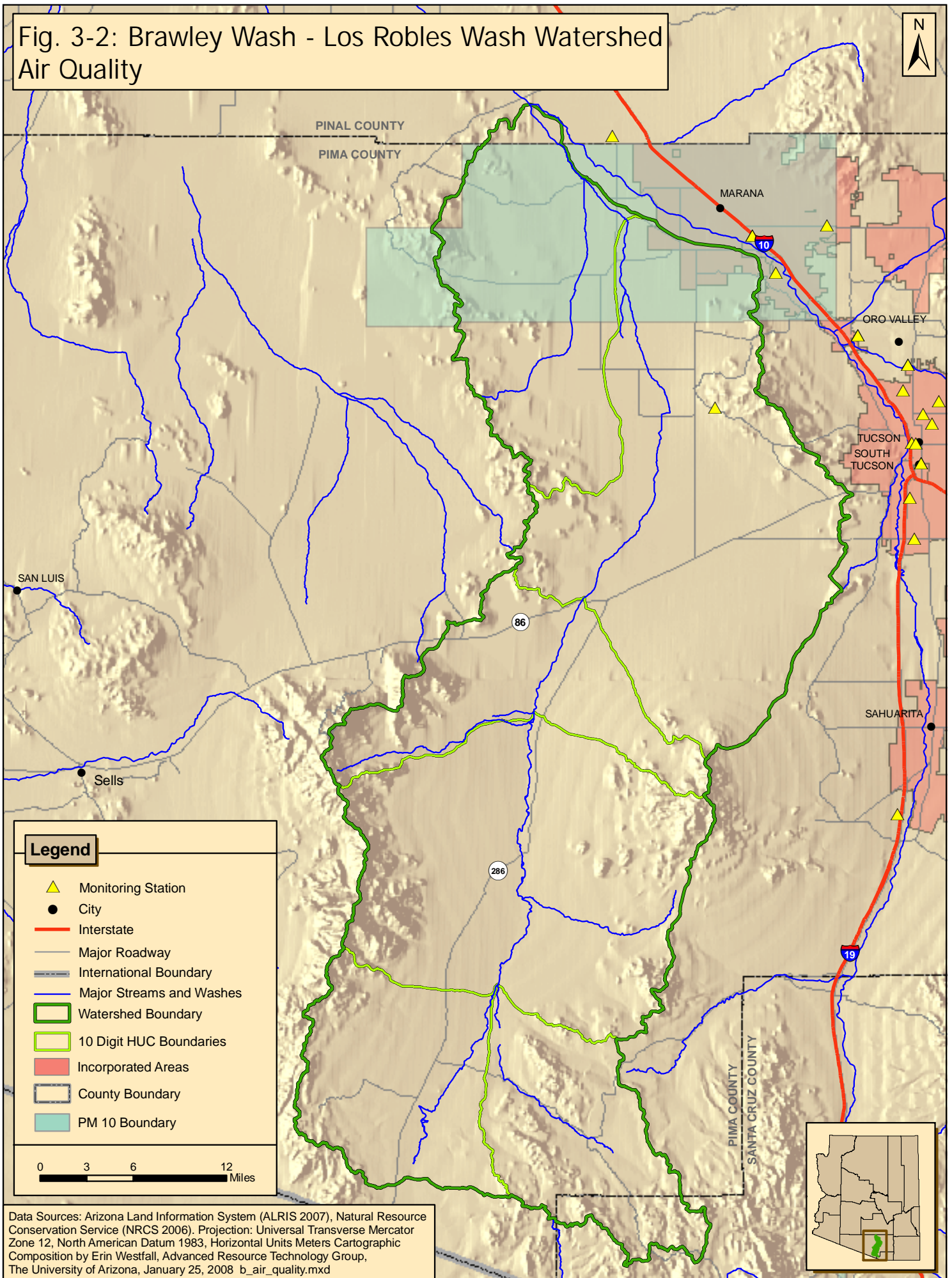
**Assessed Lakes**  
 ▭ Impaired

**Active Management Area**  
 ▭ Pinal AMA  
 ▭ Santa Cruz AMA  
 ▭ Tucson AMA

0 2.5 5 10 Miles

Data Sources: Arizona Land Information System (ALRIS 2007), Natural Resource Conservation Service (NRCS 2006), ADEQ (ADEQ 2006). Projection: Universal Transverse Mercator Zone 12, North American Datum 1983, Horizontal Units Meters Cartographic Composition by Erin Westfall, Advanced Resource Technology Group, The University of Arizona, January 25, 2008 b\_assessed\_streams.mxd

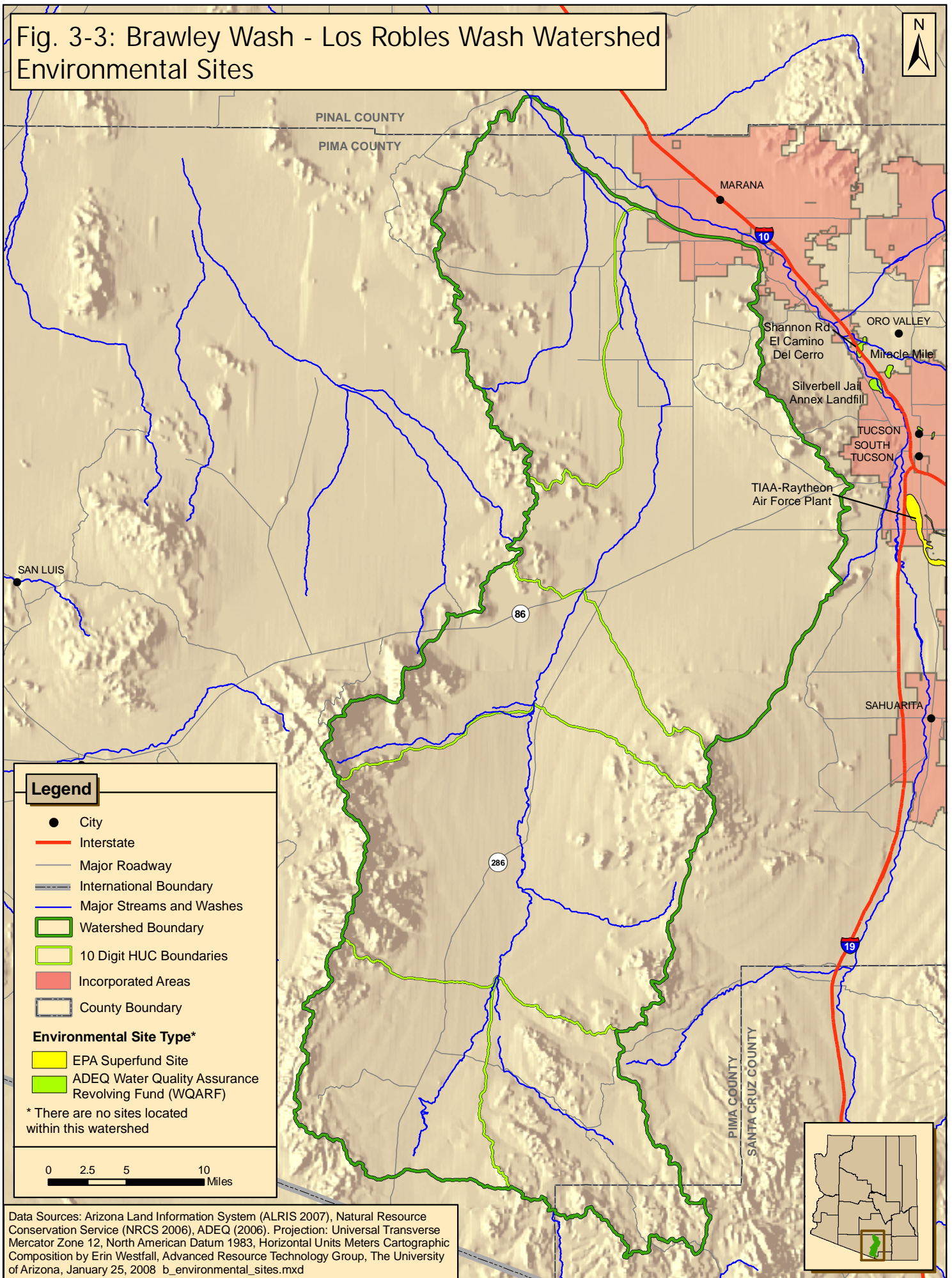
Fig. 3-2: Brawley Wash - Los Robles Wash Watershed Air Quality



Data Sources: Arizona Land Information System (ALRIS 2007), Natural Resource Conservation Service (NRCS 2006). Projection: Universal Transverse Mercator Zone 12, North American Datum 1983, Horizontal Units Meters Cartographic Composition by Erin Westfall, Advanced Resource Technology Group, The University of Arizona, January 25, 2008 b\_air\_quality.mxd



Fig. 3-3: Brawley Wash - Los Robles Wash Watershed Environmental Sites

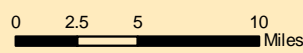


**Legend**

- City
- Interstate
- Major Roadway
- International Boundary
- Major Streams and Washes
- ▭ Watershed Boundary
- ▭ 10 Digit HUC Boundaries
- ▭ Incorporated Areas
- ▭ County Boundary

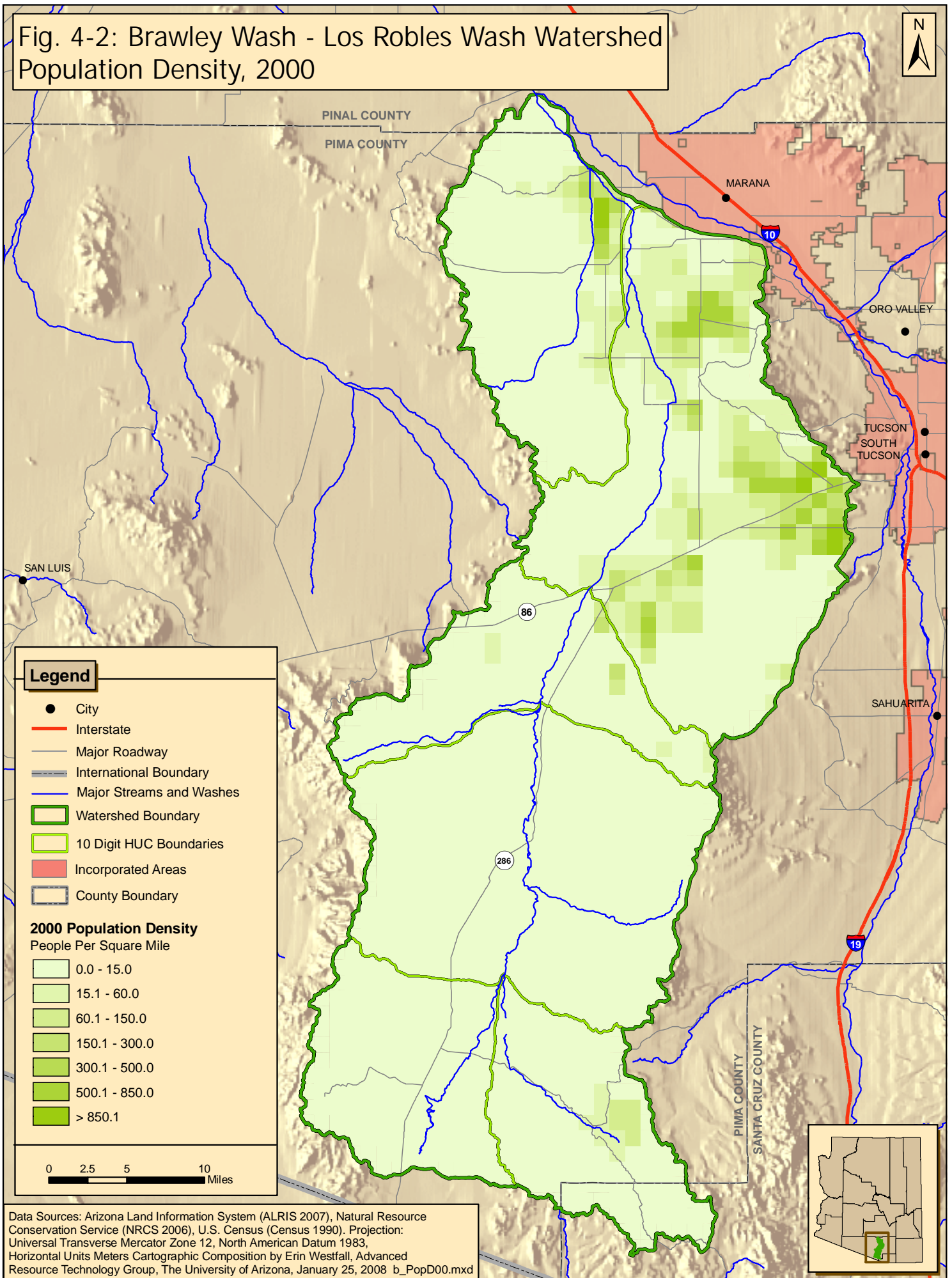
- Environmental Site Type\***
- ▭ EPA Superfund Site
  - ▭ ADEQ Water Quality Assurance Revolving Fund (WQARF)

\* There are no sites located within this watershed



Data Sources: Arizona Land Information System (ALRIS 2007), Natural Resource Conservation Service (NRCS 2006), ADEQ (2006). Projection: Universal Transverse Mercator Zone 12, North American Datum 1983, Horizontal Units Meters Cartographic Composition by Erin Westfall, Advanced Resource Technology Group, The University of Arizona, January 25, 2008 b\_environmental\_sites.mxd

Fig. 4-2: Brawley Wash - Los Robles Wash Watershed  
Population Density, 2000



**Legend**

- City
- Interstate
- Major Roadway
- International Boundary
- Major Streams and Washes
- ▭ Watershed Boundary
- ▭ 10 Digit HUC Boundaries
- ▭ Incorporated Areas
- ▭ County Boundary

**2000 Population Density**  
People Per Square Mile

- ▭ 0.0 - 15.0
- ▭ 15.1 - 60.0
- ▭ 60.1 - 150.0
- ▭ 150.1 - 300.0
- ▭ 300.1 - 500.0
- ▭ 500.1 - 850.0
- ▭ > 850.1

0 2.5 5 10 Miles

Data Sources: Arizona Land Information System (ALRIS 2007), Natural Resource Conservation Service (NRCS 2006), U.S. Census (Census 1990). Projection: Universal Transverse Mercator Zone 12, North American Datum 1983, Horizontal Units Meters Cartographic Composition by Erin Westfall, Advanced Resource Technology Group, The University of Arizona, January 25, 2008 b\_PopD00.mxd



Fig. 4-1: Brawley Wash - Los Robles Wash Watershed  
Population Density, 1990

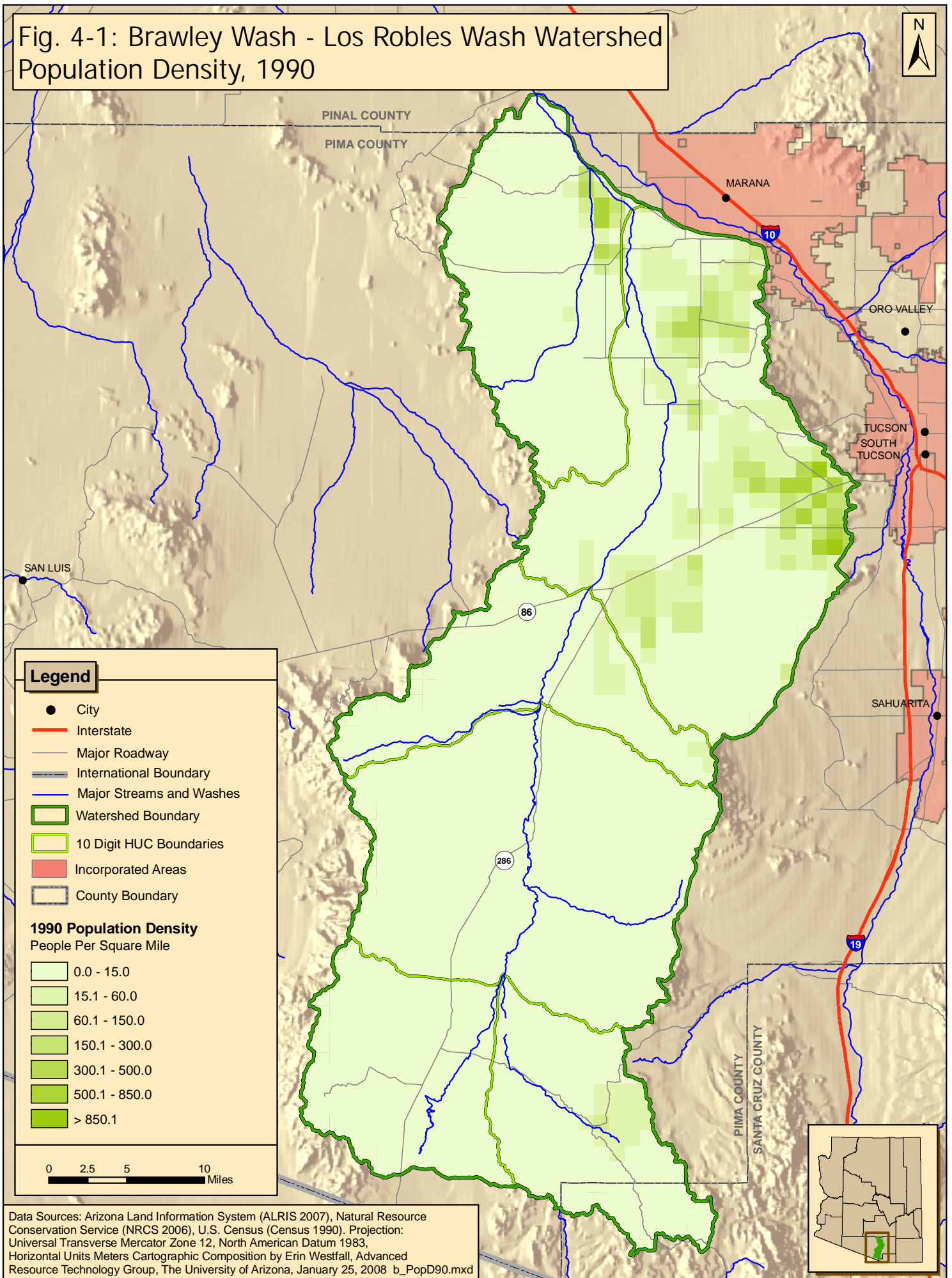


Fig. 4-3: Brawley Wash - Los Robles Wash Watershed  
Population Density Change, 1990-2000

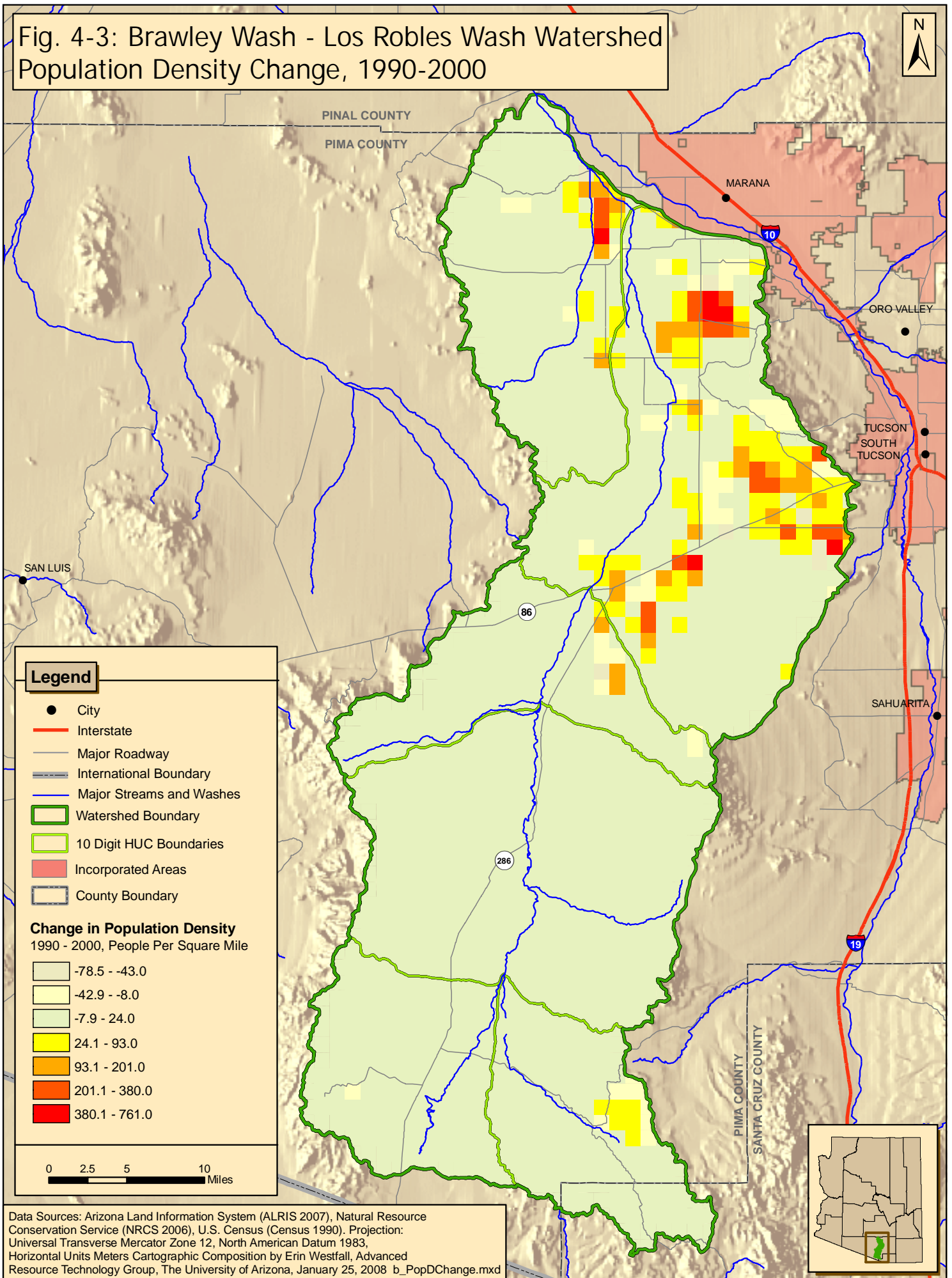
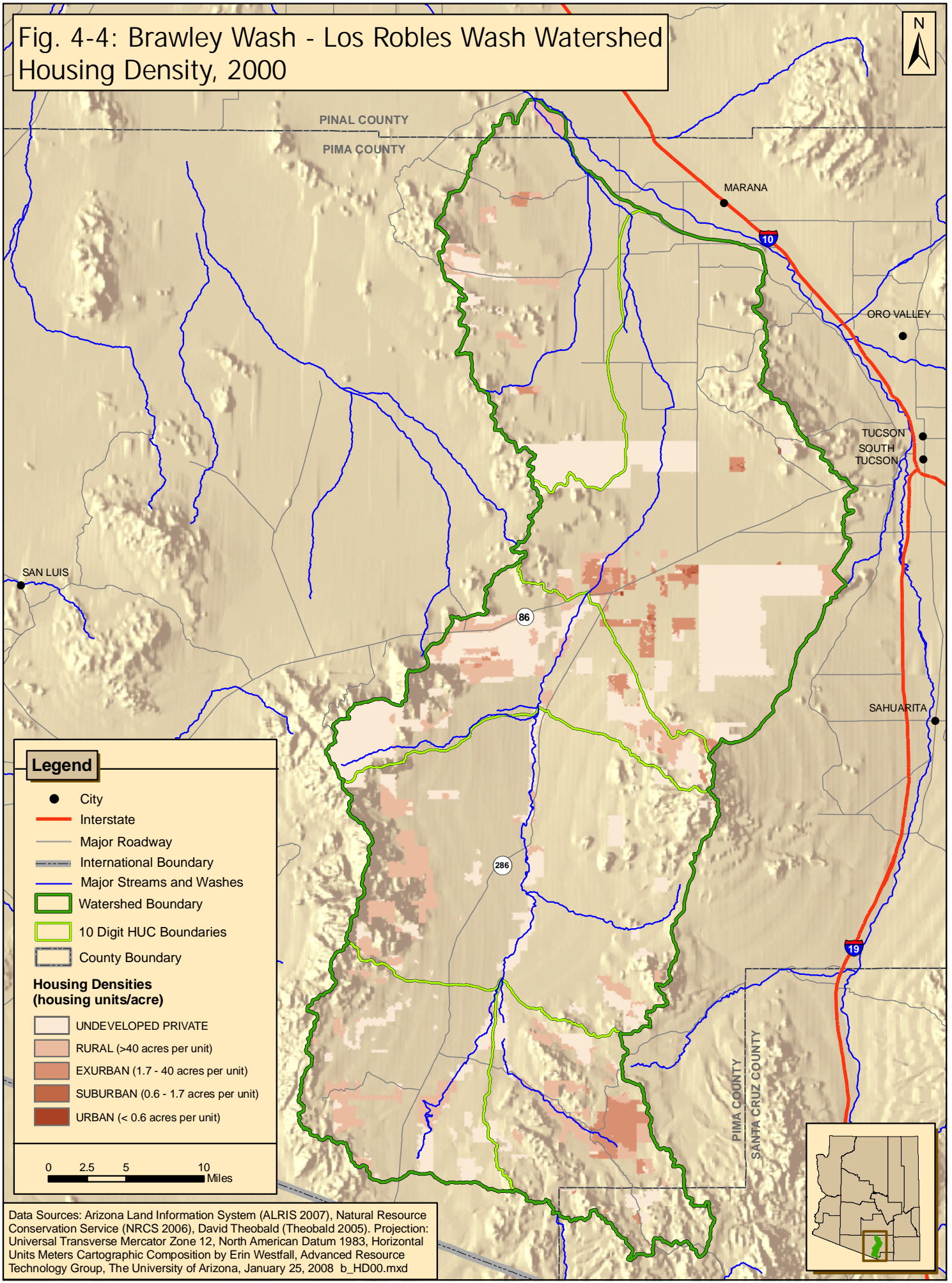




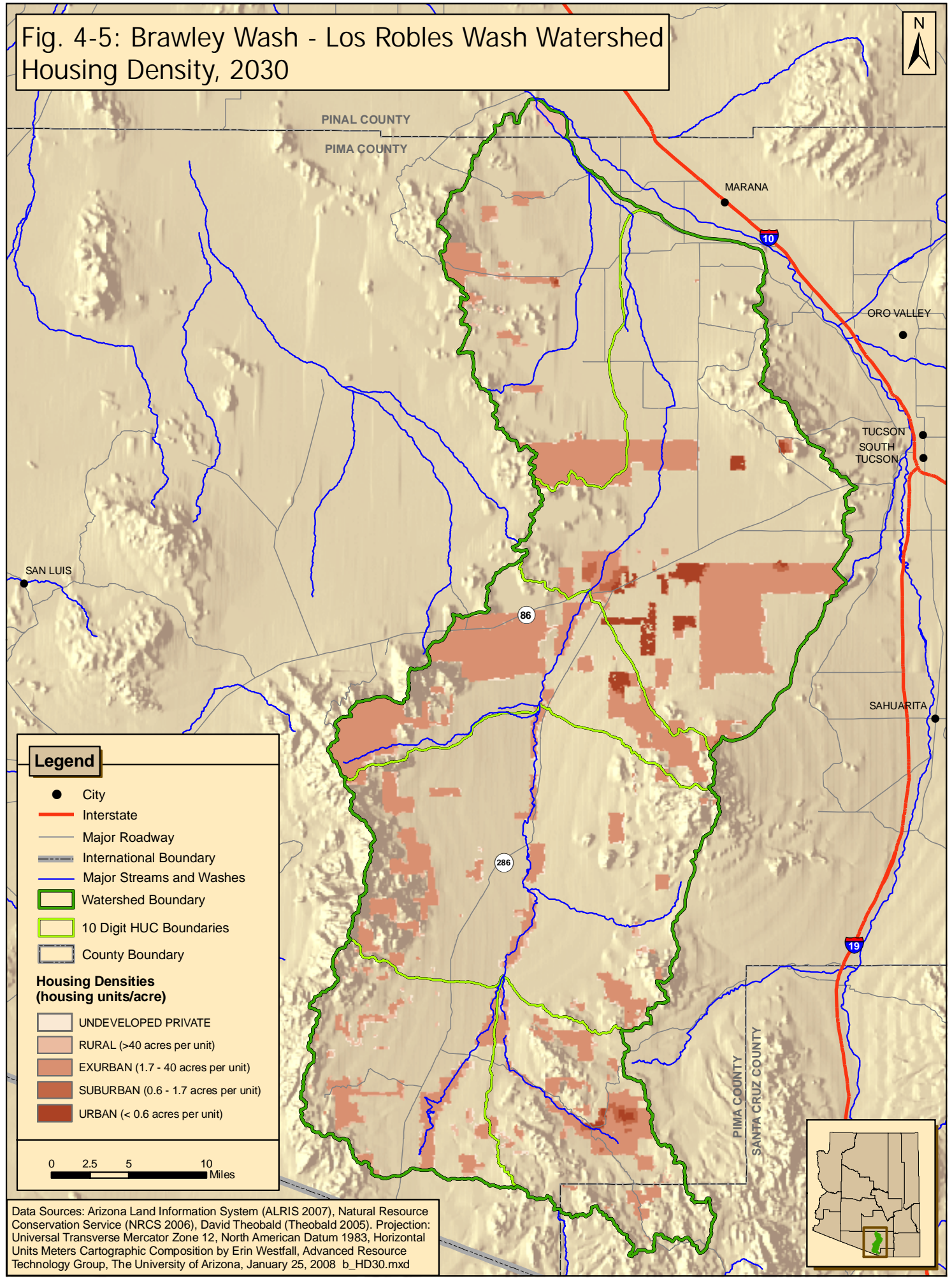
Fig. 4-4: Brawley Wash - Los Robles Wash Watershed Housing Density, 2000



Data Sources: Arizona Land Information System (ALRIS 2007), Natural Resource Conservation Service (NRCS 2006), David Theobald (Theobald 2005). Projection: Universal Transverse Mercator Zone 12, North American Datum 1983, Horizontal Units Meters Cartographic Composition by Erin Westfall, Advanced Resource Technology Group, The University of Arizona, January 25, 2008 b\_HD00.mxd



Fig. 4-5: Brawley Wash - Los Robles Wash Watershed Housing Density, 2030



Data Sources: Arizona Land Information System (ALRIS 2007), Natural Resource Conservation Service (NRCS 2006), David Theobald (Theobald 2005). Projection: Universal Transverse Mercator Zone 12, North American Datum 1983, Horizontal Units Meters Cartographic Composition by Erin Westfall, Advanced Resource Technology Group, The University of Arizona, January 25, 2008 b\_HD30.mxd