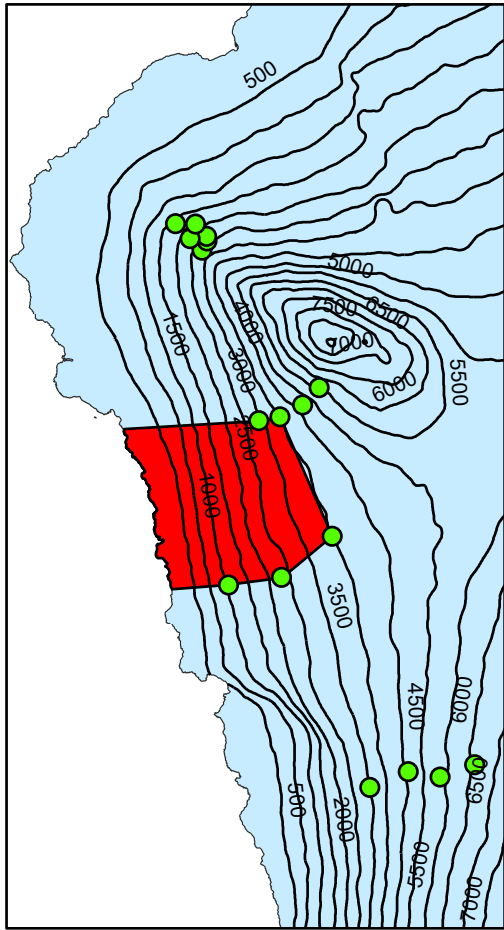
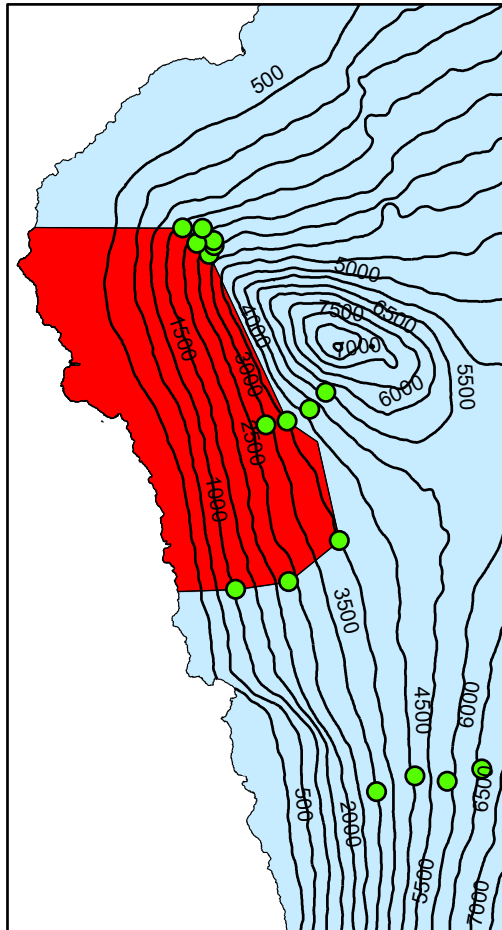


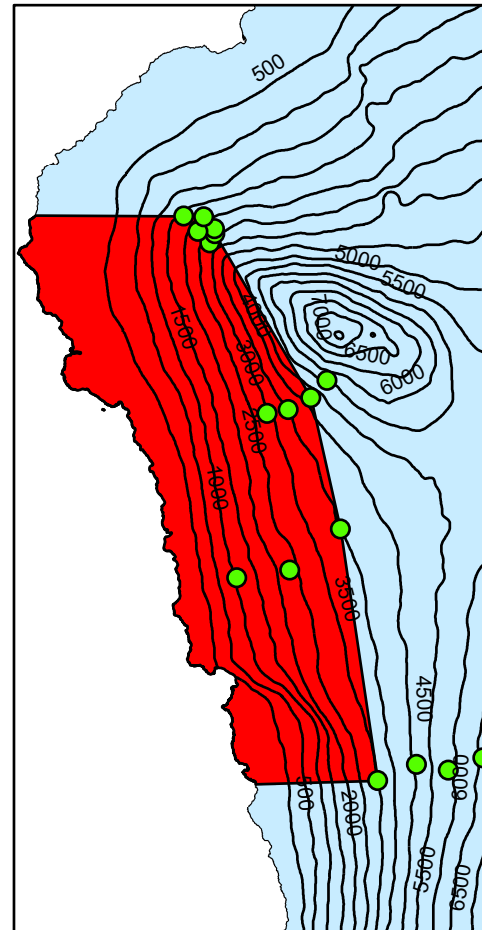
Acreeage of Infected Area



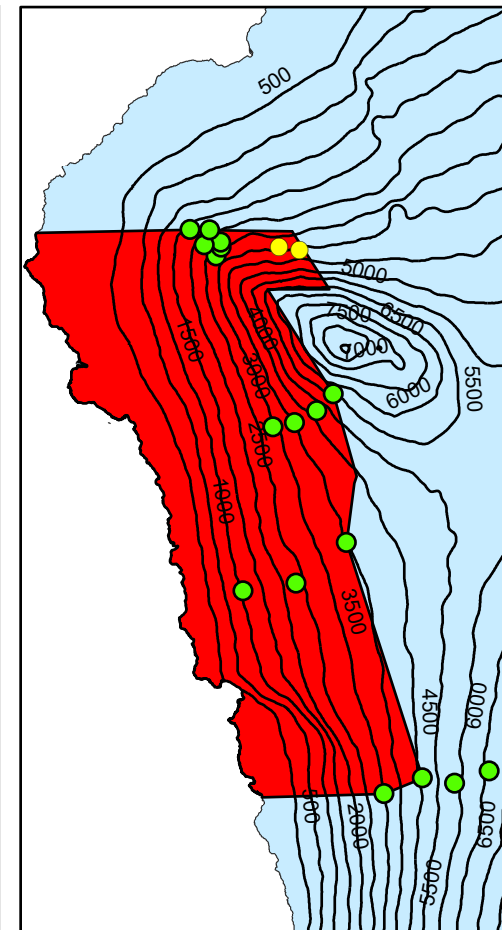
2016: 27,298 acres



2017: 69,441 acres



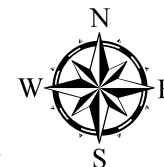
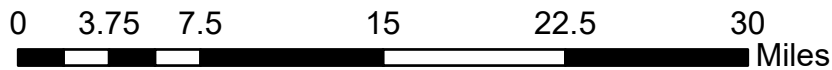
2018: 125,900 acres



2019: 142,468 acres

Legend

- TLSB Impacted Area
- Ranch Survey Transects
- TLSB Found at Pu'u Wa'awa'a



The Two Line Spittlebug project is supported by grants through the Hawaii Dept. of Agriculture, Contract No. 65973; Hawaii Dept. of Land and Natural Resources, Hawaii Invasive Species Council Contract No. C81112; and Hawaii County Office of Research and Development via the Big Island Resource Conservation and Development Council Contract No. C006362.